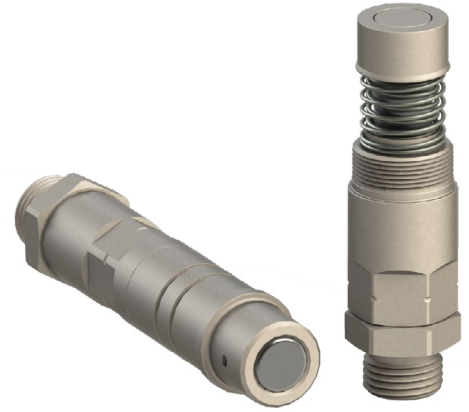


Engate Cartuchos para Multi Acoplamento

(Série J180000G)

 **Acoples Cartuchos para Multi Acople**
(Serie J180000G)

 **Cartridge Couplers for Multi-Coupling**
(J180000G Series)



Aplicações / Aplicaciones / Applications



Propriedades

Principal fluido de passagem: óleo hidráulico
Conexão: pressionando botão vermelho para permitir movimentação da alavanca, seguido do alinhamento dos pinos guia do conjunto móvel nos furos guia da parte fixa, possibilitando a junção de ambas as partes
Desconexão: aliviar pressão residual antes de efetuar a desconexão. A seguir, pressionar o botão vermelho para permitir a retração da alavanca
Conexão sob pressão: permitida
Material: aço carbono de alta qualidade com peças de desgaste tratadas termicamente (luva e pino)
Tratamento superficial: banho de zinco níquel
Vedação: NBR (Borracha Nitrílica), Poliuretano e anel anti-extrusão em PTFE
Tratamento superficial: banho de zinco níquel
Temperatura de trabalho: -25°C (-13°F) até 100°C (212°F)
 Outras vedações, molas e roscas sob consulta

Propiedades

Principal fluido de pasaje: aceite hidráulico
Conexión: pulsando el botón rojo para el movimiento de la palanca, seguido de alineación de los pasadores guía del conjunto móvil en los agujeros del conjunto fijo, lo que permite la unión de las partes
Desconexión: aliviar la presión residual antes de efectuar la desconexión. A continuación, presione el botón rojo para permitir la retracción de la palanca
Conexión bajo presión: permitido
Material: acero carbono de alta calidad con piezas de desgaste tratadas térmicamente (casco y manguito)
Tratamiento superficial: baño de zinc níquel
Sello: NBR (Goma de Nitrilo), Poliuretano y anillo anti-extrusión de PTFE
Temperatura de trabajo: -25°C (-13°F) hasta 100°C (212°F)
 Otros sellos, resortes y roscas bajo consulta

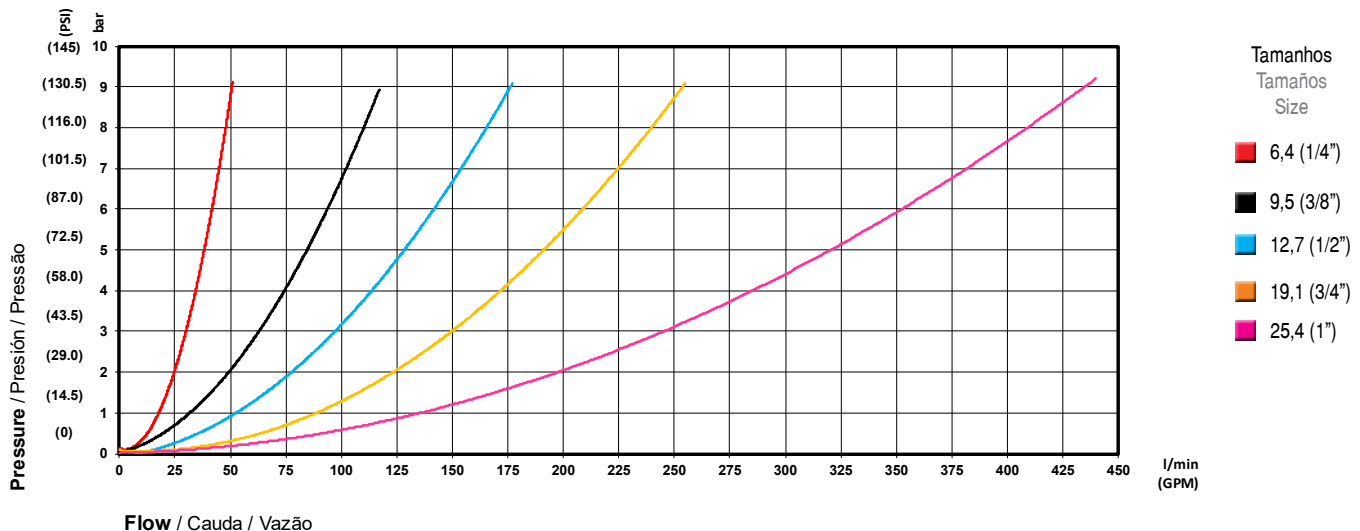
Features

Main fluid of passage: hydraulic oil
Connection: pressing the red button to allow the movement of the handle, followed by the alignment of the guide pins of the mobile half in the guide holes of the fixed manifold, allowing the joining of both parts
Disconnection: relieve residual pressure before disconnecting. Then, press the red button to allow the handler retraction
Connection under pressure: allowed
Material: high-grade carbon steel with heat treated wear parts (sleeve and nipple)
Surface treatment: zinc nickel plating
Seals: NBR (Nitrile Rubber), Polyurethane and backup ring in PTFE
Working temperature: -25°C (-13°F) to 100°C (212°F)
 Others seals and threads on request

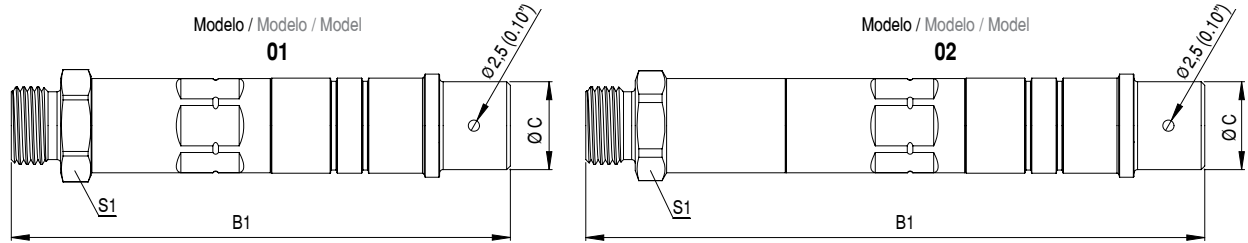
Informações Técnicas / Informaciones Técnicas / Technical Information

Tamanho Tamaño Size mm (in)	Vazão Nominal com perda de pressão de 2 bar (29 PSI) Caudal Nominal con pérdida de presión de 2 bar (29 PSI) of pressure drop L/min (GPM)	Pressão de Ruptura Presión de Rotura Burst Pressure		Perda de óleo ao desconectar (1 bar) Pérdida de aceite al desconectar (1 bar) Fluid loss during disconnection (14 PSI) ml (oz)
		Fêmea Hembra Female bar (PSI)	Macho Macho Male bar (PSI)	
6,4 (1/4")	24 (6.24)	1.200 (17,405)	1.300 (18,855)	0,007 (0.0002)
9,5 (3/8")	50 (13.21)	1.150 (16,679)	1.100 (15,954)	0,008 (0.0003)
12,7 (1/2")	85 (22.45)	1.100 (15,954)	1.240 (17,985)	0,010 (0.0003)
19,1 (3/4")	125 (33.02)	1.080 (15,684)	1.080 (15,684)	0,020 (0.0007)
25,4 (1")	200 (52.83)	1.080 (15,684)	1.020 (14,648)	0,030 (0.0010)

Perda de Carga / Pérdida de Presión / Pressure Drop



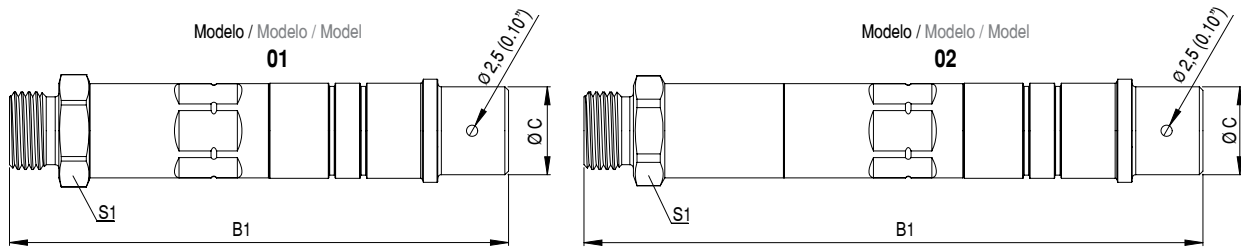
Multi Acoplamento Cartucho / Multi Acople Cartucho / Multi-Coupling Cartridge



Engate Cartucho Lado Móvel / Acople Cartucho Móvil / Cartridge Coupler of the Mobile Half

Tamanho Tamaño Size mm (in)	Código Código Part Number	A1 Rosca Rosca Thread	Norma da Rosca Norma de la Rosca Thread Standard	Torque Torque Torque Nm	B1 mm (in)	S1 mm (in)	Ø C mm (in)	Peso Peso Weight g (lb)	Modelo Model Modelo	Estoque Stock Stock
6,4 (1/4")	115.182762J1	9/16" UNF ORB (int.)	SAE J1926	26 - 34	60,2 (2.37")	15,9 (5/8")	16,0 (0.63")	95 (0.21)	01	🔍
	115.182711JH1	3/8" BSP (int.)	DIN 3852-2	40 - 56	79,7 (3.14")	20,7 (13/16")	16,0 (0.63")	124 (0.27)	01	🔍
	115.182736JH1	M12x1,50 L6 (ext.)	ISO 8434-1-L	18 - 26	75,7 (2.98")	20,7 (13/16")	16,0 (0.63")	121 (0.27)	01	🔍
	115.182737JH1	M14x1,50 L8 (ext.)	ISO 8434-1-L	20 - 28	75,7 (2.98")	20,7 (13/16")	16,0 (0.63")	121 (0.27)	01	✓
	115.182742JH1	M20x1,50 S12 (ext.)	ISO 8434-1-S	68 - 86	79,7 (2.98")	20,7 (13/16")	16,0 (0.63")	140 (0.31)	01	🔍
	115.182761JH1	11/16" UN ORFS (ext.)	SAE J1453	32 - 38	77,9 (3.07")	19,1 (3/4")	16,0 (0.63")	132 (0.29)	01	🔍
	115.182766JH1	7/16" UNF JIC (ext.)	SAE J514	16 - 22	79,5 (3.12")	17,5 (11/16")	16,0 (0.63")	121 (0.27)	01	🔍
	115.182768JH1	9/16" UNF JIC (ext.)	SAE J514	26 - 34	79,5 (3.14")	17,5 (11/16")	16,0 (0.63")	120 (0.26)	01	🔍
	115.182718JH1*	9/16" UNF ORB (int.) "Long"	SAE J1926	26 - 34	81,2 (3.20")	19,1 (3/4")	16,0 (0.63")	134 (0.30)	02	🔍
	115.182797JH1*	11/16" UN ORFS (ext.) "Long"	SAE J1453	32 - 38	97,9 (3.85")	19,1 (3/4")	16,0 (0.63")	169 (0.37)	02	🔍
9,5 (3/8")	115.183708JC1	1/4" BSP (int.)	DIN 3852-2	24 - 32	111,4 (4.38")	22,2 (7/8")	19,6 (0.77")	189 (0.42)	01	🔍
	115.183718JC1	9/16" ORB UNF (int.)	SAE J1926	26 - 34	112,5 (4.43")	20,2 (25/32")	19,6 (0.77")	188 (0.41)	01	✓
	115.183737JC1	M14x1,50 L8 (ext.)	ISO 8434-1-L	20 - 28	110,8 (4.36")	22,2 (7/8")	19,6 (0.77")	175 (0.39)	01	✓
	115.183762JC1	11/16" UN ORFS (ext.)	SAE J1453	32 - 38	111,1 (4.37")	22,2 (7/8")	19,6 (0.77")	181 (0.40)	01	🔍
	115.183768JC1	9/16" UNF JIC (int.)	SAE J514	26 - 34	114,6 (4.53")	22,2 (7/8")	19,6 (0.77")	178 (0.39)	01	✓
	115.183711JC1*	1/4" BSP (int.) "Long"	DIN 3852-2	24 - 32	125,4 (5.01")	22,2 (7/8")	19,6 (0.77")	229 (0.51)	02	🔍
	115.183722JC1*	9/16" UNF ORB (int.) "Long"	SAE J1926	26 - 34	128,5 (5.06")	22,2 (7/8")	19,6 (0.77")	227 (0.50)	02	🔍
	115.183786JC1*	9/16" UNF JIC (int.) "Long"	SAE J514	26 - 34	139,4 (5.49")	22,2 (7/8")	19,6 (0.77")	253 (0.56)	02	🔍
	115.183797JC1*	11/16" UN ORFS (ext.) "Long"	SAE J1453	32 - 38	137,8 (5.42")	22,2 (7/8")	19,6 (0.77")	244 (0.54)	02	✓
	115.183799JC1*	M14x1,50 L8 (ext.) "Long"	ISO 8434-1-L	20 - 28	132,3 (5.21")	22,2 (7/8")	19,6 (0.77")	218 (0.48)	02	✓
	115.183756J1	M18x1,50 ORB (ext.)	ISO 6149	40 - 50	93,9 (3.69")	22,2 (7/8")	19,6 (0.77")	156 (0.34)	01	🔍
	115.183757J1	M22x1,50 ORB (ext.)	ISO 6149	74 - 96	96,4 (3.79")	27,0 (1.11/16")	19,6 (0.77")	197 (0.43)	01	🔍
	115.183758J1	3/8" NPTF (int.)	ANSI B1.20.3	30 - 40	93,3 (3.67")	19,1 (3/4")	19,6 (0.77")	135 (0.30)	01	🔍
	115.183759J1	1/2" NPTF (int.)	ANSI B1.20.3	52 - 66	94,8 (3.73")	25,4 (1")	19,6 (0.77")	189 (0.42)	01	✓
	115.183761J1	3/8" BSP (int.)	DIN 3852-2	40 - 56	93,3 (3.67")	19,1 (3/4")	19,6 (0.77")	133 (0.29)	01	✓
	115.183762J1	1/2" BSP (int.)	DIN 3852-2	72 - 88	94,9 (3.73")	25,4 (1")	19,6 (0.77")	185 (0.41)	01	✓
	115.183763J1	3/4" UNF ORB (int.)	SAE J1926	48 - 62	94,9 (3.73")	23,8 (15/16")	19,6 (0.77")	169 (0.37)	01	✓
	115.183764J1	7/8" UNF ORB (int.)	SAE J1926	58 - 74	96,9 (3.81")	27,0 (1.11/16")	19,6 (0.77")	196 (0.43)	01	✓
	115.183739JC1	M18x1,50 L12(ext.)	ISO 8434-1-L	46 - 60	111,8 (4.40")	22,2 (7/8")	19,6 (0.77")	175 (0.39)	01	🔍
	115.183740JC1	M22x1,50 L15 (ext.)	ISO 8434-1-L	74 - 96	112,8 (4.44")	22,2 (7/8")	19,6 (0.77")	182 (0.40)	01	✓
115.183742JC1	M20x1,50 S12 (ext.)	ISO 8434-1-S	68 - 86	112,8 (4.44")	22,2 (7/8")	19,6 (0.77")	184 (0.41)	01	🔍	
115.183744JC1	M24x1,50 S16 (ext.)	ISO 8434-1-S	82 - 108	115,3 (4.54")	22,2 (7/8")	19,6 (0.77")	197 (0.43)	01	✓	
115.183763JC1	13/16" UN ORFS (ext.)	SAE J1453	42 - 52	113,1 (4.45")	22,2 (7/8")	19,6 (0.77")	189 (0.42)	01	🔍	
115.183764JC1	1" UNS ORFS (ext.)	SAE J1453	58 - 70	116,3 (4.58")	25,4 (1")	19,6 (0.77")	228 (0.50)	01	✓	
115.183769JC1	3/4" UNF JIC (ext.)	SAE J514	48 - 62	117,3 (4.62")	22,2 (7/8")	19,6 (0.77")	188 (0.42)	01	🔍	
115.183770JC1	7/8" UNF JIC (ext.)	SAE J514	58 - 74	119,9 (4.72")	22,2 (7/8")	19,6 (0.77")	194 (0.43)	01	🔍	
115.183707JC1*	M22x1,50 ORB (ext.) "Long"	ISO 6149	74 - 96	151,2 (5.95")	22,2 (7/8")	19,6 (0.77")	310 (0.68)	02	🔍	
115.183709JC1*	3/8" BSP (int.) "Long"	DIN 3852-2	40 - 56	112,7 (4.44")	22,2 (7/8")	19,6 (0.77")	184 (0.41)	02	✓	
115.183714JC1*	3/8" NPT (int.) "Long"	ANSI B1.20.1	30 - 40	114,0 (4.49")	22,2 (7/8")	19,6 (0.77")	189 (0.42)	02	🔍	
115.183715JC1*	1/2" NPT (int.) "Long"	ANSI B1.20.1	52 - 66	119,4 (4.70")	25,4 (1")	19,6 (0.77")	209 (0.46)	02	🔍	
115.183787JC1*	3/4" UNF JIC (int.) "Long"	SAE J514	48 - 62	142,3 (5.60")	22,2 (7/8")	19,6 (0.77")	259 (0.57)	02	🔍	
115.183791JC1*	M18x1,50 L12(ext.) "Long"	ISO 8434-1-L	46 - 60	135,8 (5.34")	22,2 (7/8")	19,6 (0.77")	239 (0.53)	02	🔍	
115.183792JC1*	M22x1,50 L15 (ext.) "Long"	ISO 8434-1-L	74 - 96	137,8 (5.42")	22,2 (7/8")	19,6 (0.77")	242 (0.53)	02	✓	
115.183795JC1*	M20x1,50 S12 (ext.) "Long"	ISO 8434-1-S	68 - 86	137,8 (5.42")	22,2 (7/8")	19,6 (0.77")	257 (0.57)	02	🔍	
115.183798JC1*	13/16" UN ORFS (ext.) "Long"	SAE J1453	42 - 52	141,8 (5.58")	22,2 (7/8")	19,6 (0.77")	272 (0.60)	02	🔍	
115.184776J1	M22x1,50 ORB (int.)	ISO 6149	74 - 96	99,1 (3.90")	23,8 (15/16")	24,2 (0.95")	216 (0.48)	01	🔍	
115.184778J1	1/2" NPTF (int.)	ANSI B1.20.3	52 - 66	96,5 (3.80")	22,2 (7/8")	24,2 (0.95")	204 (0.45)	01	✓	
115.184781J1	1/2" BSP (int.)	DIN 3852-2	72 - 88	97,5 (3.84")	22,2 (7/8")	24,2 (0.95")	203 (0.45)	01	🔍	
115.184783J1	3/4" UNF ORB (int.)	SAE J1926	48 - 62	96,5 (3.80")	22,2 (7/8")	24,2 (0.95")	206 (0.45)	01	✓	
115.184784J1	7/8" UNF ORB (int.)	SAE J1926	58 - 74	99,1 (3.90")	25,4 (1")	24,2 (0.95")	215 (0.47)	01	🔍	
115.184737JD1	M18x1,50 L12 (ext.)	ISO 8434-1-L	46 - 60	115,0 (4.55")	22,2 (7/8")	24,2 (0.95")	252 (0.56)	01	🔍	
115.184738JD1	M22x1,50 L15 (ext.)	ISO 8434-1-L	74 - 96	116,0 (4.57")	22,2 (7/8")	24,2 (0.95")	259 (0.57)	01	✓	
115.184748JD1	13/16" UN ORFS (ext.)	SAE J1453	42 - 52	117,0 (4.60")	22,2 (7/8")	24,2 (0.95")	266 (0.59)	01	🔍	
115.184749JD1	1" UNS ORFS (ext.)	SAE J1453	58 - 70	120,0 (4.72")	25,4 (1")	24,2 (0.95")	288 (0.64)	01	🔍	
115.184756JD1	3/4" UNF JIC (int.)	SAE J514	48 - 62	120,2 (4.73")	22,2 (7/8")	24,2 (0.95")	259 (0.57)	01	🔍	
115.184757JD1	7/8" UNF JIC (int.)	SAE J514	58 - 74	123,1 (4.84")	22,2 (7/8")	24,2 (0.95")	275 (0.61)	01	🔍	
115.184765JD1	M20x1,50 S12 (ext.)	ISO 8434-1-S	68 - 86	116,0 (4.57")	22,2 (7/8")	24,2 (0.95")	263 (0.58)	01	🔍	

Multi Acoplamento Cartucho / Multi Acople Cartucho / Multi-Coupling Cartridge



Engate Cartucho Lado Móvel / Acople Cartucho Móvil / Cartridge Coupler of the Mobile Half

Tamanho Tamaño Size mm (in)	Código Código Part Number	A1 Rosca Rosca Thread	Norma da Rosca Norma de la Rosca Thread Standard	Torque Torque Torque Nm	B1 mm (in)	S1 mm (in)	C Ø mm (in)	Peso Peso Weight g (lb)	Modelo Model Modelo	Estoque Stock Stock
12,7 (1/2")	115.184766JD1	M24x1,50 S16 (ext.)	ISO 8434-1-S	82 - 108	118,0 (4.64")	25,4 (1")	24,2 (0.95")	274 (0.60)	01	🔍
	115.184710JD1*	M22x1,50 ORB (int.) "Long"	ISO 6149	74 - 96	121,8 (4.79")	27,0 (1.1/16")	24,2 (0.95")	282 (0.62)	02	🔍
	115.184713JD1*	1/2" BSP (int.) "Long"	DIN 3852-2	72 - 88	119,0 (4.68")	25,4 (1")	24,2 (0.95")	272 (0.60)	02	🔍
	115.184716JD1*	1/2" NPT (int.) "Long"	ANSI B1.20.1	52 - 66	119,0 (4.68")	25,4 (1")	24,2 (0.95")	276 (0.61)	02	🔍
	115.184719JD1*	3/4" UNF ORB (int.) "Long"	SAE J1926	48 - 62	119,0 (4.68")	25,4 (1")	24,2 (0.95")	276 (0.61)	02	🔍
	115.184720JD1*	7/8" UNF ORB (int.) "Long"	SAE J1926	58 - 74	121,8 (4.79")	27,0 (1.1/16")	24,2 (0.95")	282 (0.62)	02	🔍
	115.184790JD1*	3/4" UNF JIC (int.) "Long"	SAE J514	48 - 62	146,0 (5.75")	22,2 (7/8")	24,2 (0.95")	331 (0.73)	02	🔍
	115.184791JD1*	7/8" UNF JIC (int.) "Long"	SAE J514	58 - 74	151,6 (5.97")	22,2 (7/8")	24,2 (0.95")	351 (0.77)	02	🔍
	115.184793JD1*	M22x1,50 L15 (ext.) "Long"	ISO 8434-1-L	74 - 96	141,0 (5.55")	22,2 (7/8")	24,2 (0.95")	326 (0.72)	02	✓
	115.184796JD1*	M24x1,50 S16 (ext.) "Long"	ISO 8434-1-S	82 - 108	144,5 (5.69")	25,4 (1")	24,2 (0.95")	367 (0.81)	02	🔍
	115.184798JD1*	13/16" UN ORFS (ext.) "Long"	SAE J1453	42 - 52	143,5 (5.65")	22,2 (7/8")	24,2 (0.95")	341 (0.75)	02	🔍
	115.184799JD1*	1" UNS ORFS (ext.) "Long"	SAE J1453	58 - 70	149,0 (5.86")	28,6 (1.1/8")	24,2 (0.95")	428 (0.94)	02	🔍
	115.184777.J1	M27x1,50 ORB (ext.)	ISO 6149	120 - 150	102,6 (4.04")	30,0 (1.3/16")	24,2 (0.95")	303 (0.67)	01	🔍
	115.184779.J1	3/4" NPTF (int.)	ANSI B1.20.3	68 - 88	100,6 (3.96")	30,0 (1.3/16")	24,2 (0.95")	307 (0.68)	01	🔍
	115.184782.J1	3/4" BSP (int.)	DIN 3852-2	120 - 150	100,6 (3.96")	30,0 (1.3/16")	24,2 (0.95")	306 (0.68)	01	🔍
	115.184785.J1	1.1/16" UN ORB (int.)	SAE J1926	90 - 116	102,6 (4.04")	30,0 (1.3/16")	24,2 (0.95")	304 (0.67)	01	✓
	115.184722JD1	1.3/16" UN ORB (int.)	SAE J1926	100 - 125	126,5 (4.98")	36,5 (1.7/16")	24,2 (0.95")	329 (0.73)	01	🔍
	115.184739JD1	M26x1,50 L18 (ext.)	ISO 8434-1-L	100 - 125	116,5 (4.59")	27,0 (1.1/16")	24,2 (0.95")	273 (0.60)	01	🔍
	115.184758JD1	1.1/16" UN JIC (int.)	SAE J514	90 - 116	126,2 (4.97")	27,0 (1.1/16")	24,2 (0.95")	297 (0.66)	01	🔍
	115.184714JD1*	3/4" BSP (int.) "Long"	DIN 3852-2	120 - 150	122,7 (4.83")	33,4 (1.5/16")	24,2 (0.95")	323 (0.71)	02	🔍
	115.184717JD1*	3/4" NPT (int.) "Long"	ANSI B1.20.1	68 - 88	123,5 (4.86")	31,8 (1.1/8")	24,2 (0.95")	311 (0.69)	02	🔍
	115.184721JD1*	1.1/16" UN ORB (int.) "Long"	SAE J1926	90 - 116	123,3 (4.85")	33,4 (1.5/16")	24,2 (0.95")	315 (0.69)	02	🔍
	115.184792JD1*	1.1/16" UN JIC (int.) "Long"	SAE J514	90 - 116	156,7 (6.17")	27,0 (1.1/16")	24,2 (0.95")	400 (0.88)	02	🔍
115.184794JD1*	M26x1,50 L18 (ext.) "Long"	ISO 8434-1-L	100 - 125	144,5 (5.69")	27,0 (1.1/16")	24,2 (0.95")	371 (0.82)	02	🔍	
19,1 (3/4")	115.185758.J1	3/4" NPT (int.)	ANSI B1.20.1	68 - 88	116,9 (4.60")	30,0 (1.3/16")	26,7 (1.05")	408 (0.90)	01	🔍
	115.185761.J1	3/4" BSP (int.)	DIN 3852-2	120 - 150	116,9 (4.60")	30,0 (1.3/16")	26,7 (1.05")	406 (0.90)	01	🔍
	115.185763.J1	1.1/16" UN ORB (int.)	SAE J1926	90 - 116	119,1 (4.69")	30,0 (1.3/16")	26,7 (1.05")	404 (0.89)	01	🔍
	115.185759.J1	1" NPT (int.)	ANSI B1.20.1	82 - 108	120,1 (4.73")	35,0 (1.3/8")	26,7 (1.05")	545 (1.20)	01	🔍
	115.185762.J1	1" BSP (int.)	DIN 3852-2	200 - 240	120,4 (4.74")	35,0 (1.3/8")	26,7 (1.05")	534 (1.18)	01	🔍
	115.185764.J1	1.3/16" UN ORB (int.)	SAE J1926	100 - 125	120,2 (4.73")	31,8 (1.1/4")	26,7 (1.05")	449 (0.99)	01	🔍
25,4 (1")	115.185765.J1	1.5/16" UN ORB (int.)	SAE J1926	128 - 160	122,0 (4.80")	38,1 (1.1/2")	26,7 (1.05")	568 (1.25)	01	🔍
	115.187765.J1	1" BSP (int.)	DIN 3852-2	200 - 240	147,8 (5.82")	36,5 (1.7/16")	35,8 (1.41")	1.020 (2.25)	01	🔍
	115.187768.J1	1.5/16" UN ORB (int.)	SAE J1926	128 - 160	148,8 (5.86")	36,5 (1.7/16")	35,8 (1.41")	1.014 (2.24)	01	🔍

* "Long": engates cartucho montados no centro do manifold que tem o sextavado acima dos outros engates, para facilitar a montagem.

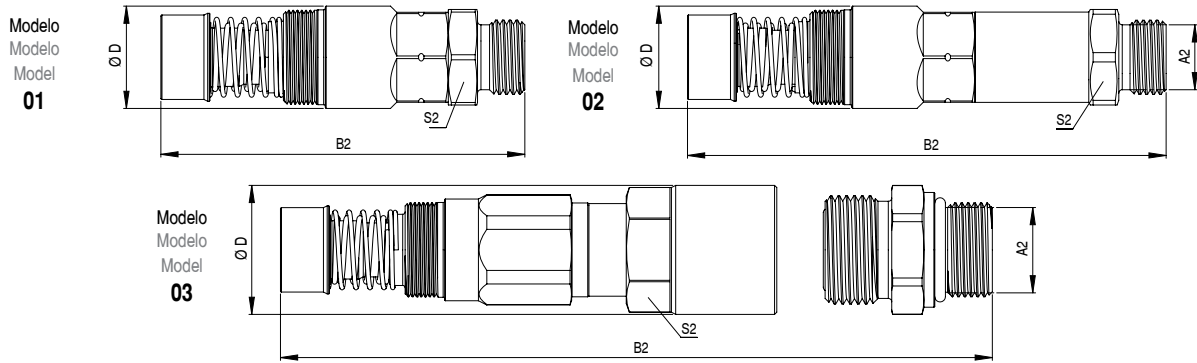
* "Long": acoples cartucho montados en el centro del manifold teniendo su hexagonal arriba de los otros acoples, para facilitar el montaje.

* "Long": cartridge couplers mounted in the center of the manifold with the hex above others cartridges, to make the assembly easier.

(int.)	Rosca Interna / Rosca Interna / Internal Thread
(ext.)	Rosca Externa / Rosca Externa / External Thread

✓	Disponível / Disponible / Available
🔍	Sob Consulta / Bajo Pedido / On Request

Multi Acoplamiento Cartucho / Multi Acople Cartucho / Multi-Coupling Cartridge



Engate Cartucho Lado Fijo / Acople Cartucho Fijo / Cartridge Coupler of the Fixed Half

Tamaño Tamaño Size mm (in)	Código Código Code	A2 Rosca Thread	Norma da Rosca Norma de la Rosca Thread Standard	Torque Torque Torque Nm	B2 mm (in)	S2 mm (in)	Ø D mm (in)	Peso Peso Weight g (lb)	Modelo Model Modelo	Estoque Stock Stock
6,4 (1/4")	117.182731.G	9/16" UNF ORB (int.)	SAE J1926	26 - 34	49,9 (1.97")	17,5 (11/16")	19,1 (0.75")	50 (0.11)	01	🔍
	117.182711.GH	3/8" BSP (int.)	DIN 3852-2	40 - 56	69,4 (2.73")	20,7 (13/16")	22,2 (0.88")	90 (0.20)	01	🔍
	117.182736.GH	M12x1,50 L6 (ext.)	ISO 8434-1-L	18 - 26	65,4 (2.58")	17,5 (11/16")	19,1 (0.75")	76 (0.17)	01	🔍
	117.182737.GH	M14x1,50 L8 (ext.)	ISO 8434-1-L	20 - 28	65,4 (2.58")	17,5 (11/16")	19,1 (0.75")	76 (0.17)	01	🔍
	117.182761.GH	11/16" UN ORFS (ext.)	SAE J1453	32 - 38	67,6 (2.66")	19,1 (3/4")	20,7 (0.81")	87 (0.19)	01	🔍
	117.182766.GH	7/16" UNF JIC (ext.)	SAE J514	16 - 22	69,2 (2.72")	17,5 (11/16")	D	76 (0.17)	01	🔍
	117.182768.GH	9/16" UNF JIC (ext.)	SAE J514	26 - 34	69,0 (2.72")	17,5 (11/16")	19,1 (0.75")	77 (0.17)	01	🔍
9,5 (3/8")	117.182797.GH*	11/16" UN ORFS (ext.) "Long"	SAE J1453	32 - 38	87,6 (3.45")	19,1 (3/4")	20,7 (0.81")	124 (0.27)	02	🔍
	117.183708.GC	1/4" BSP (int.)	DIN 3852-2	24 - 32	84,95 (3.34")	22,2 (7/8")	25,0 (0.98")	164 (0.36)	01	🔍
	117.183718.GC	9/16" UNF ORFS (int.)	SAE J1926	26 - 34	86,1 (3.39")	20,0 (25/32")	25,0 (0.98")	164 (0.36)	01	🔍
	117.183737.GC	M14x1,50 L8 (ext.)	ISO 8434-1-L	20 - 28	84,4 (3.32")	22,2 (7/8")	24,0 (0.95")	150 (0.33)	01	🔍
	117.183762.GC	11/16" UN ORFS (ext.)	SAE J1453	32 - 38	84,7 (3.33)	22,2 (7/8")	25,0 (0.98")	157 (0.35)	01	🔍
	117.183768.GC	9/16" UNF JIC (int.)	SAE J514	26 - 34	88,2 (3.23")	22,2 (7/8")	25,0 (0.98")	153 (0.34)	01	🔍
	117.183786.GC*	9/16" UNF JIC (int.) "Long"	SAE J514	26 - 34	113,2 (4.46")	22,2 (7/8")	25,0 (0.98")	229 (0.51)	02	🔍
	117.183797.GC*	11/16" UN ORFS (ext.) "Long"	SAE J1453	32 - 38	111,4 (4.38")	22,2 (7/8")	24,5 (0.97")	219 (0.48)	02	🔍
	117.183799.GC*	M14x1,50 L8 (ext.) "Long"	ISO 8434-1-L	20 - 28	98,9 (3.89")	22,2 (7/8")	24,0 (0.95")	193 (0.43)	02	🔍
	117.183729.G	M18x1,50 ORB (int.)	ISO 6149	40 - 50	67,8 (2.67")	23,8 (15/16")	25,4 (1.00")	117 (0.26)	01	🔍
	117.183731.G	M22x1,50 ORB (int.)	ISO 6149	74 - 96	68,8 (2.71")	27,0 (1.11/16")	29,3 (1.15")	128 (0.28)	01	🔍
	117.183732.G	3/8" NPTF (int.)	ANSI B1.20.3	30 - 40	66,6 (2.62")	23,8 (15/16")	23,8 (0.94")	111 (0.25)	01	🔍
	117.183733.G	1/2" NPTF (int.)	ANSI B1.20.3	52 - 66	67,8 (2.667")	23,8 (15/16")	25,4 (1.00")	123 (0.27)	01	🔍
	117.183734.G	3/8" BSP (int.)	DIN 3852-2	40 - 56	66,9 (2.63")	21,0 (27/32")	23,8 (0.94")	108 (0.24)	01	🔍
	117.183735.G	1/2" BSP (int.)	DIN 3852-2	72 - 88	67,3 (2.65")	25,4 (1")	27,8 (1.09")	119 (0.26)	01	🔍
	117.183736.G	3/4" UNF ORB (int.)	SAE J1926	48 - 62	67,8 (2.67")	23,8 (15/16")	25,4 (1.00")	113 (0.25)	01	🔍
	117.183737.G	7/8" UNF ORB (int.)	SAE J1926	58 - 74	69,3 (2.73")	23,8 (15/16")	25,4 (1.00")	123 (0.27)	01	🔍
	117.183739.GC	M18x1,50 L12(ext.)	ISO 8434-1-L	46 - 60	85,4 (3.36")	22,2 (7/8")	25,0 (0.98")	151 (0.33)	01	🔍
	117.183740.GC	M22x1,50 L15 (ext.)	ISO 8434-1-L	74 - 96	86,4 (3.40")	22,2 (7/8")	25,0 (0.98")	157 (0.35)	01	🔍
	117.183742.GC	M20x1,50 S12 (ext.)	ISO 8434-1-S	68 - 86	86,4 (3.40")	22,2 (7/8")	25,0 (0.98")	160 (0.35)	01	🔍
	117.183744.GC	M24x1,50 S16 (ext.)	ISO 8434-1-S	82 - 108	88,9 (3.50")	22,2 (7/8")	28,0 (1.10")	172 (0.38)	01	🔍
	117.183763.GC	13/16" UN ORFS (ext.)	SAE J1453	42 - 52	86,7 (3.41")	22,2 (7/8")	25,0 (0.98")	164 (0.36)	01	🔍
	117.183764.GC	1" UNS ORFS (ext.)	SAE J1453	58 - 70	89,9 (3.64")	25,4 (1")	31,75 (1.25")	221 (0.49)	01	🔍
	117.183769.GC	3/4" UNF JIC (ext.)	SAE J514	48 - 62	92,4 (3.58")	22,2 (7/8")	25,0 (0.98")	164 (0.36)	01	🔍
	117.183770.GC	7/8" UNF JIC (ext.)	SAE J514	58 - 74	93,5 (3.68")	22,2 (7/8")	25,0 (0.98")	170 (0.38)	01	🔍
	117.183787.GC*	3/4" UNF JIC (ext.) "Long"	SAE J514	48 - 62	115,9 (4.55")	22,2 (7/8")	25,0 (0.98")	237 (0.52)	02	🔍
	117.183791.GC*	M18x1,50 L12 (ext.) "Long"	ISO 8434-1-L	46 - 60	109,4 (4.31")	22,2 (7/8")	25,0 (0.98")	217 (0.48)	02	🔍
	117.183792.GC*	M22x1,50 L15 (ext.) "Long"	ISO 8434-1-L	74 - 96	111,4 (4.38")	22,2 (7/8")	25,0 (0.98")	220 (0.49)	02	🔍
	117.183795.GC*	M20x1,50 S12 (ext.) "Long"	ISO 8434-1-S	68 - 86	111,4 (4.38")	22,2 (7/8")	25,0 (0.98")	234 (0.52)	02	🔍
	117.183798.GC*	13/16" UN ORFS (ext.) "Long"	SAE J1453	42 - 52	115,4 (4.54")	22,2 (7/8")	25,0 (0.98")	248 (0.55)	02	🔍
	117.183722.GG**	1/2" BSP (ext.)	DIN 3852-2	72 - 88	142,2 (5.61")	25,4 (1")	30,0 (1.18")	381 (0.84)	03	🔍
	117.183731.GG**	M18x1,50 ORB (ext.)	ISO 6149	40 - 45	140,7 (5.54")	25,4 (1")	30,0 (1.18")	367 (0.81)	03	🔍
	117.183732.GG**	M22x1,50 ORB (ext.)	ISO 6149	74 - 96	141,7 (5.58")	25,4 (1")	30,0 (1.18")	382 (0.84)	03	🔍
117.183749.GG**	3/4" UNF ORB (ext.)	SAE J1926	48 - 62	137,3 (5.40")	25,4 (1")	30,0 (1.18")	365 (0.81)	03	🔍	
117.183750.GG**	7/8" UNF ORB (ext.)	SAE J1926	58 - 74	139,5 (5.49")	25,4 (1")	30,0 (1.18")	376 (0.83)	03	🔍	
117.183763.GG**	9/16" UNF ORB (ext.)	SAE J1926	48 - 62	140,2 (5.52")	25,4 (1")	30,0 (1.18")	362 (0.80)	03	🔍	
117.183764.GG**	3/8" BSP (ext.)	DIN 3852-2	40 - 56	140,2 (5.52")	25,4 (1")	30,0 (1.18")	377 (0.83)	03	🔍	

* "Long": engates cartucho montados no centro do manifold que tem o sextavado acima dos outros engates, para facilitar a montagem.

** "Long": acoples cartucho montados en el centro del manifold teniendo su hexagonal arriba de los otros acoples, para facilitar el montaje.

** "Long": cartridge couplers mounted in the center of the manifold with the hex above others cartridges, to make the assembly easier.

** Engates cartucho que são usados nos multi acoplamentos montados direto no comando hidráulico, são usados nas séries: N280700A, S280700E e U280700G.

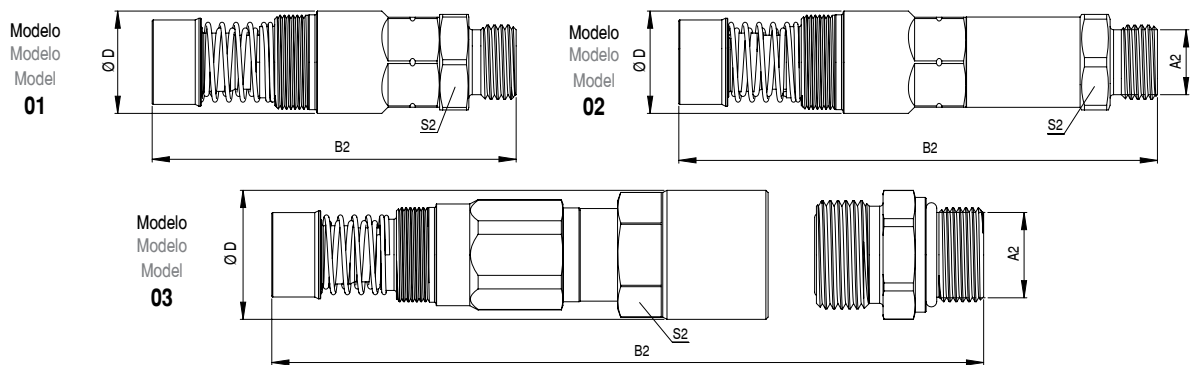
** Los acoplamientos cartucho que se utilizan en multi acople montados directamente en el accionamiento hidráulico, se utilizan en las series: N280700A, S280700E y U280700G.

** Cartridge coupler of multi couplers who is monted in the control valve, are used in the series: N280700A, S280700E and U280700G.

(int.)	Rosca Interna / Rosca Interna / Internal Thread
(ext.)	Rosca Externa / Rosca Externa / External Thread

✓	Disponível / Disponible / Available
🔍	Sob Consulta / Bajo Pedido / On Request

Multi Acoplamento Cartucho / Multi Acople Cartucho / Multi-Coupling Cartridge



Engate Cartucho Lado Fixo / Acople Cartucho Fijo / Cartridge Coupler of the Fixed Half

Tamanho Tamaño Size mm (in)	Código Código Code	A2 Rosca Thread	Norma da Rosca Norma de la Rosca Thread Standard	Torque Torque Nm	B2 mm (in)	S2 mm (in)	Ø D mm (in)	Peso Peso Weight g (lb)	Modelo Model Modelo	Estoque Stock Stock
12,7 (1/2")	117.184729.G	M22x1,50 ORB (int.)	ISO 6149	74 - 96	75,6 (2.97")	23,8 (15/16")	28,6 (1.13")	176 (0.39)	01	🔍
	117.184731.G	1/2" NPTF (int.)	ANSI B1.20.3	52 - 66	74,6 (2.94")	23,8 (15/16")	30,0 (1.18")	191 (0.42)	01	✓
	117.184732.G	1/2" BSP (int.)	DIN 3852-2	72 - 88	74,6 (2.94")	23,8 (15/16")	28,6 (1.13")	178 (0.40)	01	🔍
	117.184735.G	3/4" UNF ORB (int.)	SAE J1926	48 - 62	74,1 (2.92")	25,4 (1")	28,6 (1.13")	172 (0.38)	01	✓
	117.184736.G	7/8" UNF ORB (int.)	SAE J1926	58 - 74	75,6 (2.97")	26,0 (1.1/32")	28,6 (1.13")	166 (0.37)	01	🔍
	117.184709.GD	M18x1,50 ORB (int.)	ISO 6149	40 - 50	90,1 (3.55")	23,8 (15/16")	28,6 (1.13")	236 (0.52)	01	🔍
	117.184737.GD	M18x1,50 L12 (ext.)	ISO 8434-1-L	46 - 60	92,6 (3.64")	22,2 (7/8")	28,6 (1.13")	218 (0.48)	01	🔍
	117.184738.GD	M22x1,50 L15 (ext.)	ISO 8434-1-L	74 - 96	93,6 (3.68")	22,2 (7/8")	28,6 (1.13")	225 (0.50)	01	✓
	117.184748.GD	13/16" UN ORFS (ext.)	SAE J1453	42 - 52	94,6 (3.72")	22,2 (7/8")	28,6 (1.13")	232 (0.51)	01	🔍
	117.184749.GD	1" UNS ORFS (ext.)	SAE J1453	58 - 70	97,6 (3.84")	25,4 (1")	31,0 (1.22")	254 (0.56)	01	🔍
	117.184756.GD	3/4" UNF JIC (int.)	SAE J514	48 - 62	97,8 (3.84")	22,2 (7/8")	28,6 (1.13")	226 (0.50)	01	🔍
	117.184757.GD	7/8" UNF JIC (int.)	SAE J514	58 - 74	100,7 (3.96")	22,2 (7/8")	28,6 (1.13")	241 (0.53)	01	🔍
	117.184765.GD	M20x1,50 S12 (ext.)	ISO 8434-1-S	68 - 86	93,6 (3.68")	22,2 (7/8")	28,6 (1.13")	229 (0.51)	01	🔍
	117.184766.GD	M24x1,50 S16 (ext.)	ISO 8434-1-S	82 - 108	95,6 (3.76")	25,4 (1")	28,6 (1.13")	241 (0.53)	01	🔍
	117.184710.GD*	M22x1,50 ORB (int.) "Long"	ISO 6149	74 - 96	93,4 (3.68")	27,0 (1.1/16")	28,6 (1.13")	249 (0.55)	02	🔍
	117.184713.GD*	1/2" BSP (int.) "Long"	DIN 3852-2	72 - 88	96,6 (3.80")	25,4 (1")	28,6 (1.13")	239 (0.53)	02	🔍
	117.184716.GD*	1/2" NPT (int.) "Long"	ANSI B1.20.1	52 - 66	96,6 (3.80")	25,4 (1")	28,6 (1.13")	243 (0.54)	02	🔍
	117.184719.GD*	3/4" UNF ORB (int.) "Long"	SAE J1926	48 - 62	96,6 (3.80")	25,4 (1")	28,6 (1.13")	243 (0.54)	02	🔍
	117.184720.GD*	7/8" UNF ORB (int.) "Long"	SAE J1926	58 - 74	99,4 (3.91")	27,0 (1.1/16")	28,6 (1.13")	248 (0.55)	02	🔍
	117.184790.GD*	3/4" UNF JIC (int.) "Long"	SAE J514	48 - 62	123,6 (4.86")	22,2 (7/8")	28,6 (1.13")	297 (0.66)	02	🔍
	117.184791.GD*	7/8" UNF JIC (int.) "Long"	SAE J514	58 - 74	129,2 (5.09")	22,2 (7/8")	28,6 (1.13")	318 (0.70)	02	🔍
	117.184793.GD*	M22x1,50 L15 (ext.) "Long"	ISO 8434-1-L	74 - 96	118,6 (4.68")	22,2 (7/8")	28,6 (1.13")	292 (0.64)	02	✓
	117.184796.GD*	M24x1,50 S16 (ext.) "Long"	ISO 8434-1-S	82 - 108	122,1 (4.81")	25,4 (1")	28,6 (1.13")	333 (0.73)	02	🔍
	117.184798.GD*	13/16" UN ORFS (ext.) "Long"	SAE J1453	42 - 52	121,1 (4.77")	22,2 (7/8")	28,6 (1.13")	307 (0.68)	02	🔍
	117.184799.GD*	1" UNS ORFS (ext.) "Long"	SAE J1453	58 - 70	126,6 (4.98")	28,6 (1.1/8")	31,0 (1.22")	395 (0.87)	02	🔍
	117.184733.G	3/4" NPTF (int.)	ANSI B1.20.3	68 - 88	78,5 (3.09")	33,4 (1.5/16")	36,0 (1.42")	207 (0.46)	01	🔍
	117.184734.G	3/4" BSP (int.)	DIN 3852-2	120 - 150	77,3 (3.04")	33,4 (1.5/16")	36,0 (1.42")	201 (0.44)	01	🔍
	117.184737.G	1.1/16" UN ORB (int.)	SAE J1926	90 - 116	79,1 (3.11")	33,4 (1.5/16")	36,0 (1.42")	201 (0.44)	01	✓
	117.184722.GD	1.3/16" UN ORB (int.)	SAE J1926	100 - 125	104,1 (4.10")	36,5 (1.7/16")	40,0 (1.58")	304 (0.67)	01	🔍
	117.184739.GD	M26x1,50 L18 (ext.)	ISO 8434-1-L	100 - 125	94,1 (3.70")	27,0 (1.1/16")	29,0 (1.14")	240 (0.53)	01	🔍
	117.184758.GD	1.1/16" UN JIC (int.)	SAE J514	90 - 116	103,8 (4.09")	27,0 (1.1/16")	29,0 (1.14")	263 (0.58)	01	🔍
	117.184714.GD*	3/4" BSP (int.) "Long"	DIN 3852-2	120 - 150	100,3 (3.95")	33,4 (1.5/16")	37,0 (1.46")	290 (0.64)	02	🔍
117.184717.GD*	3/4" NPT (int.) "Long"	ANSI B1.20.1	68 - 88	101,1 (3.98")	31,8 (1.1/8")	35,0 (1.38")	278 (0.61)	02	🔍	
117.184792.GD*	1.1/16" UN JIC (int.) "Long"	SAE J514	90 - 116	134,3 (5.29")	27,0 (1.1/16")	29,0 (1.14")	367 (0.81)	02	✓	
117.184794.GD*	M26x1,50 L18 (ext.) "Long"	ISO 8434-1-L	100 - 125	122,1 (4.81")	27,0 (1.1/16")	29,0 (1.14")	338 (0.75)	02	🔍	
19,1 (3/4")	117.185737.G	3/4" NPT (int.)	ANSI B1.20.1	68 - 88	82,1 (3.23")	30,0 (1.3/16")	33,4 (1.31")	245 (0.54)	01	🔍
	117.185738.G	3/4" BSP (int.)	DIN 3852-2	120 - 150	81,2 (3.20")	30,0 (1.3/16")	33,4 (1.31")	240 (0.53)	01	🔍
	117.185739.G	1.1/16" UN ORB (int.)	SAE J1926	90 - 116	82,1 (3.23")	30,0 (1.3/16")	33,4 (1.31")	236 (0.72)	01	🔍
	117.185741.G	1.3/16" UN ORB (int.)	SAE J1926	100 - 125	82,1 (3.23")	31,8 (1.1/4")	36,5 (1.44")	245 (0.54)	01	🔍
	117.185742.G	1.5/16" UN ORB (int.)	SAE J1926	128 - 160	82,8 (3.26")	36,5 (1.7/16")	41,3 (1.62")	236 (0.72)	01	🔍
	117.185744.G	1" NPT (int.)	ANSI B1.20.1	82 - 108	82,8 (3.26")	33,4 (1.5/16")	38,1 (1.50")	279 (0.62)	01	🔍
25,4 (1")	117.185745.G	1" BSP (int.)	DIN 3852-2	200 - 240	82,8 (3.26")	35,0 (1.3/8")	40,0 (1.58")	309 (0.68)	01	🔍
	117.187745.E	1" BSP (int.)	DIN 3852-2	200 - 240	91,1 (3.59")	39,7 (1.9/16")	44,45 (1.75")	439 (0.97)	01	🔍
117.187748.E	1.5/16" UN ORB (int.)	SAE J1926	128 - 160	91,1 (3.59")	41,3 (1.5/8")	42,86 (1.69)	419 (0.93)	01	🔍	

* "Long": engates cartucho montados no centro do manifold que tem o sextavado acima dos outros engates, para facilitar a montagem.

* "Long": acoples cartucho montados en el centro del manifold teniendo su hexagonal arriba de los otros acoples, para facilitar el montaje.

* "Long": cartridge couplers mounted in the center of the manifold with the hex above others cartridges, to make the assembly easier.

** Engates cartucho que são usados nos multi acoplamentos montados direto no comando hidráulico, são usados nas séries: N280700A, S280700E e U280700G.

** Los acoplamentos cartucho que se utilizan en multi acople montados directamente en el accionamiento hidráulico, se utilizan en las series: N280700A, S280700E e U280700G.

** Cartridge coupler of multi couplers who is mounted in the control valve, are used in the series: N280700A, S280700E and U280700G.

(int.) Rosca Interna / Rosca Interna / Internal Thread
(ext.) Rosca Externa / Rosca Externa / External Thread

✓ Disponível / Disponible / Available
🔍 Sob Consulta / Bajo Pedido / On Request

Kit Reparo das Vedações dos Engates Cartucho

🇪🇸 Reparación de Sellos para el Acople Cartucho

🇺🇸 Cartridge Couplers Seals Repair

Tamanho Tamaño Size mm (in)	Código Código Code
6,4 (1/4")	119.180002.0
9,5 (3/8")	119.180003.0
12,7 (1/2")	119.180004.0
19,1 (3/4")	119.180005.0
25,4 (1")	119.180006.0

