

Protetores (Série 61300)

 Tapones Protectores (Serie 61300)

 Dust Caps an Plugs (61300 Series)

Aplicações / Aplicaciones / Applications



Propriedades

Principal aplicação: proteger, quando desconectadas, de sujeira e batidas as superfícies de contato e os elementos de vedação / fixação das partes macho e fêmea do engate rápido.

Material: Polietileno

Temperatura de trabalho: -25°C até +100°C

Outras cores e tamanhos sob consulta

Propiedades

Principal aplicación: proteger, cuando desconectado, de suciedad y golpes las superficies de contacto y los elementos de vedación / fijación de las partes macho y hembra del acople rápido.

Material: PVC flexible

Temperatura de trabajo: de -25°C hasta +100°C

Otros colores y tamaños bajo consulta

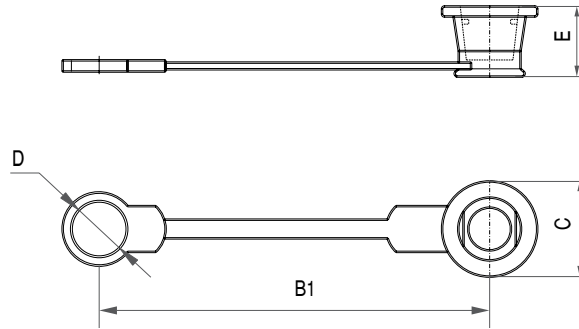
Features



Main application: protect the contact surface and oilproof seal parts against dirt and contamination as well as external damage

Material: Flexible PVC

Work temperature: from -13°F to +212°F

Others colors and sizes on request



Série Serie Series	Código Código Code	Tamanho Tamaño Size mm (in)	Cor Color Color	B1 mm (in)	C mm (in)	E mm (in)	D mm (in)	Peso Peso Wight g	Estoque Stock Stock
ERD-10	116.061300.0	6,4 (1/4")		90,0 (3.543")	19,0 (0.748")	14,0 (0.552")	13,7 (0.539")	1,98	✓
ERD-12	116.061301.0	9,5 (3/8")		90,0 (3.543")	25,0 (1")	19,0 (0.748")	13,7 (0.539")	2,08	✓

(int.) Rosca Interna / Rosca Interna / Internal Thread

(ext.) Rosca Externa / Rosca Externa / External Thread

✓ Normal de Linha / Disponible / Available

🔍 Sob Consulta / Bajo Pedido / On request