

Cotovelos (Série 61200)

 **Codos** (Serie 61200)

 **Elbow** (61200 Seies)

Aplicações / Aplicaciones / Applications



Propriedades

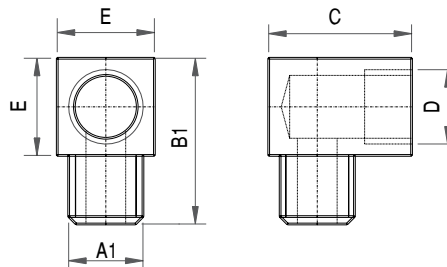
Principal aplicação: refrigeração de moldes e matrizes
Principal fluido de passagem: óleo hidráulico e água
Material: latão

Propiedades

Principal aplicación: refrigeración de moldes y matrices
Principal fluido de pasaje: aceite hidráulico y agua
Material: latón

Features

Main application: refrigeration systems, pneumatic systems, injection molding machines
Main fluid of passage: water and oil
Material: brass



Macho / Macho / Male

Código Código Code	A1 Rosca Rosca Thread	Torque Torque Torque Nm	B1 mm (in)	C mm (in)	E mm (in)	D Rosca Rosca Thread	Peso Peso Wight g	Estoque Stock Stock
116.061208.0	1/8" BSP (ext.)	10 - 15	25,0 (0.985")	25,0 (0.985")	17,0 (0.670")	1/8" BSP (int.)	53	✓
116.061204.0	1/4" NPT (ext.)	10 - 15	30,0 (1.182")	25,0 (0.985")	17,0 (0.670")	1/4" NPT (int.)	47	✓

(int.) Rosca Interna / Rosca Interna / Internal Thread
(ext.) Rosca Externa / Rosca Externa / External Thread

✓ Normal de Linha / Disponible / Available
🔍 Sob Consulta / Bajo Pedido / On request