

Male and Female Quick Release Coupling

ERD-08B Series

Usage Information

Main applications: refrigeration and pneumatic systems, injection molding machines, torch setup system, dental equipments and cosmetic manufacture tools

Main fluids of passage: compressed air and water

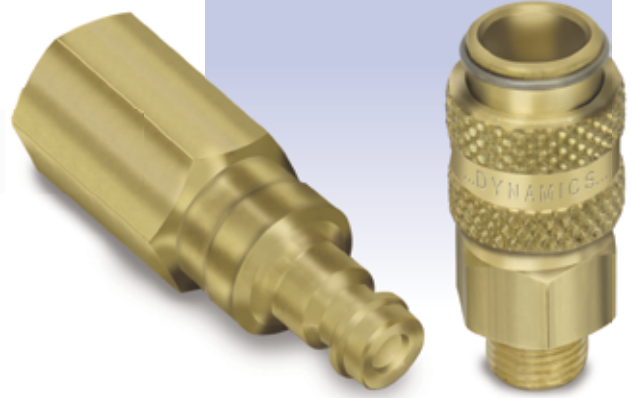
Model: fluid retention in the male and female parts (when disconnected)

Connection: pushing the male coupling (automatic)

Disconnection: pulling back the sleeve (holding the male part)

Connection under pressure: allowed

Disconnection under pressure: allowed (male part ejected)



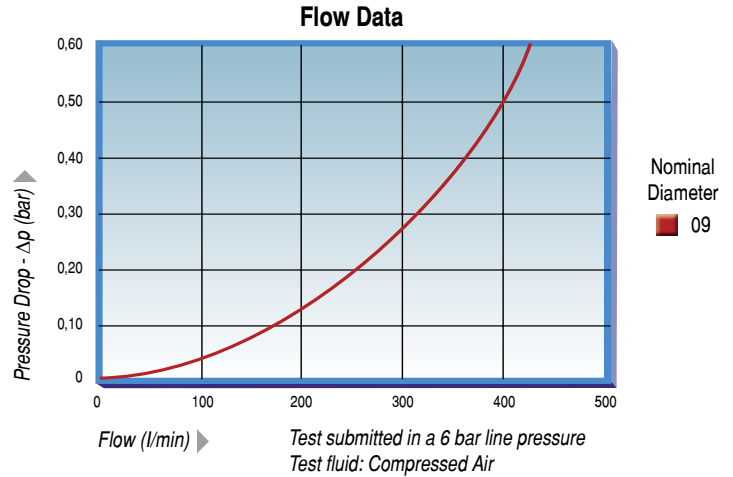
Technical Information

Nominal Diameter (mm)	Rated Flow Pressure drop of 0,5 bar (l/min)	Maximum Work Pressure (bar)	Minimum Burst Pressure (bar)	Oil spillage 1 bar (cm ³)
09	400	16	100	1.0

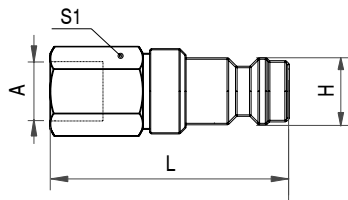
Obs.: Burst test done with hydraulic oil.

Materials

- ⇒ Male and female in brass
- ⇒ Stainless steel balls
- ⇒ Stainless steel springs
- ⇒ Oilproof seals in NBR (nitrile rubber)
Working temperature from -4°F to +176°F
- ⇒ Others seals, springs and threads on request

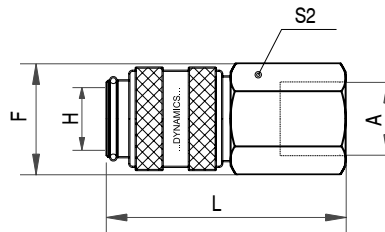


Internal Thread



Male

Code	H Nominal Diameter (mm)	A Internal Thread	L mm	S1 mm
115.060032.V	09	1/4" NPT	51	17

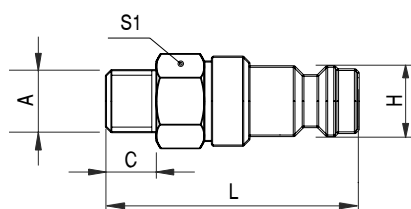


Female

Code	H Nominal Diameter (mm)	A Internal Thread	F mm	L mm	S2 mm
112.060032.B	09	1/4" NPT	19.5	47	17

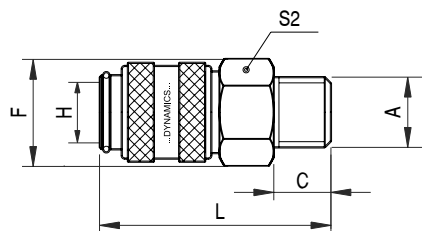
Viton (Fluorocarbon) is a Du Pont Dow Elastomers trademark. Dynamics reserves the right to change any information without notice. The data and pictures of this brochure are just informative and not authoritative.

External Thread



Male

Code	H Nominal Diameter (mm)	A External Thread	C mm	L mm	S1 mm
115.060020.V	09	1/8" NPT	8	41	14
115.060021.V	09	1/8" BSP	7	40	14
115.060022.V	09	1/4" NPT	12	45	17



Female

Code	H Nominal Diameter (mm)	A External Thread	C mm	F mm	L mm	S2 mm
112.060022.B	09	1/4" NPT	12	18.5	41	17

Hose Coupling

Female

Code	H Nominal Diameter (mm)	A External Thread	C mm	F mm	L mm	S1 mm
112.060009.B	09	1/4"	19	18.5	48	16
112.060010.B	09	5/16"	19	18.5	48	16
112.060011.B	09	3/8"	19	18.5	48	16

