

Male and Female Quick Release Coupling

ERD-08 Series

Usage Information

Main applications: refrigeration and pneumatic systems, injection molding machines, torch setup system, dental equipments and cosmetic manufacture tools

Main fluids of passage: compressed air and water

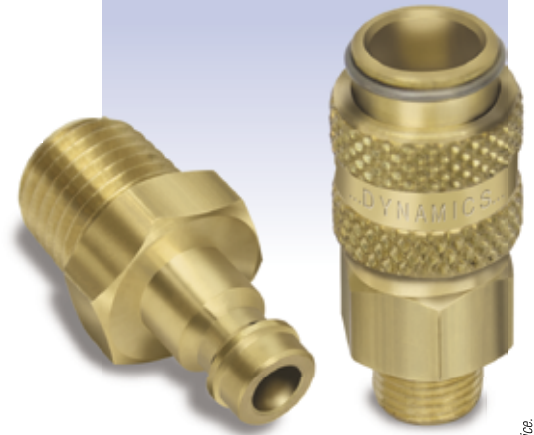
Model: fluid retention in the female part (when disconnected)

Connection: pushing the male coupling (automatic)

Disconnection: pulling back the sleeve (holding the male part)

Connection under pressure: allowed

Disconnection under pressure: allowed (male part ejected)



Technical Information

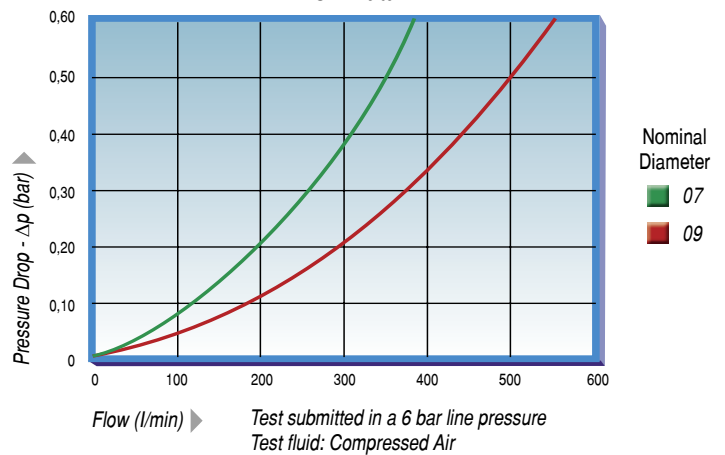
| Nominal Diameter (mm) | Rated Flow Pressure drop of 0,5 bar (l/min) | Maximum Work Pressure (bar) | Minimum Burst Pressure (bar) | Oil spillage 1 bar (cm³) |
|-----------------------|---|-----------------------------|------------------------------|--------------------------|
| 07 | 350 | 16 | 100 | 1.5 |
| 09 | 500 | 16 | 100 | 2.0 |

Obs.: Burst test done with hydraulic oil.

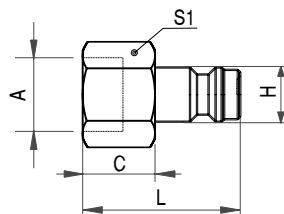
Materials

- ⇒ Male and female in brass
- ⇒ Stainless steel balls
- ⇒ Stainless steel springs
- ⇒ Oilproof seals in NBR (nitrile rubber)
Working temperature from -4°F to +176°F
- ⇒ Others seals, springs and threads on request

Flow Data

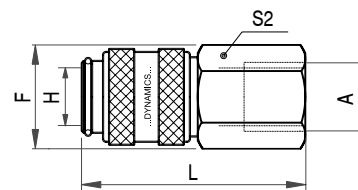


Internal Thread



Male

| Code | H Nominal Diameter (mm) | A Internal Thread | C mm | L mm | S1 mm |
|--------------|-------------------------|-------------------|------|------|-------|
| 115.060063.0 | 09 | 1/4" BSP | 11 | 25 | 16 |

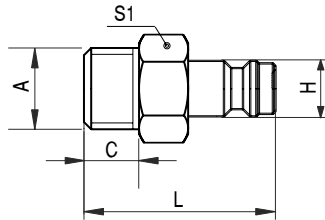


Female

| Code | H Nominal Diameter (mm) | A Internal Thread | F mm | L mm | S2 mm |
|--------------|-------------------------|-------------------|------|------|-------|
| 112.060030.0 | 09 | 1/8" NPT | 16.5 | 43 | 14 |
| 112.060032.0 | 09 | 1/4" NPT | 19.5 | 47 | 17 |

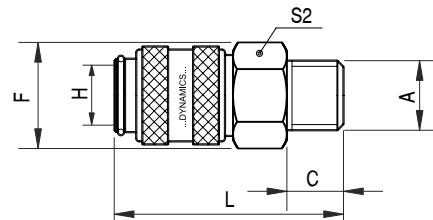
Viton (Fluorocarbon) is a Du Pont Dow Elastomers trademark.
 Dynamics reserves the right to change any information without notice.
 The data and pictures of this brochure are just informative and not authoritative.

External Thread



Male

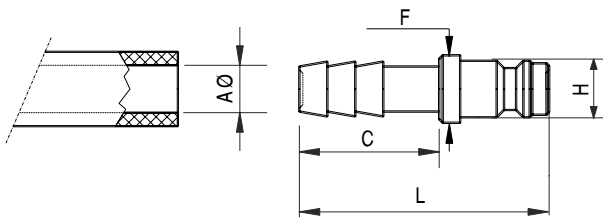
| Code | H Nominal Diameter (mm) | A External Thread | C mm | L mm | S1 mm |
|--------------|-------------------------------|-------------------------|---------|---------|----------|
| 115.260012.0 | 07 | 1/16" NPT | 8 | 28 | 3/8" |
| 115.260016.0 | 07 | 1/8" NPT | 8 | 28 | 7/16" |
| 115.060012.0 | 09 | 1/4" NPT | 12 | 32 | 16 |
| 115.060013.0 | 09 | 1/4" BSP | 9 | 29 | 17 |
| 115.060016.0 | 09 | 1/8" NPT | 8 | 28 | 14 |
| 115.060017.0 | 09 | 1/8" BSP | 7 | 27 | 14 |



Female

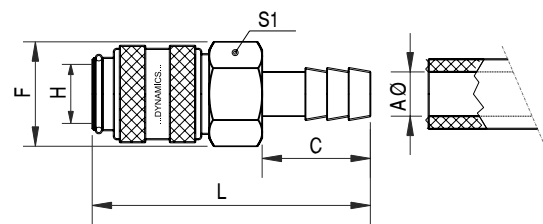
| Code | H Nominal Diameter (mm) | A External Thread | C mm | F mm | L mm | S2 mm |
|--------------|-------------------------------|-------------------------|---------|---------|---------|----------|
| 112.060021.0 | 09 | 1/8" BSP | 7 | 16.5 | 36 | 14 |
| 112.060023.0 | 09 | 1/4" BSP | 9 | 19.5 | 38 | 17 |

Hose Coupling



Male

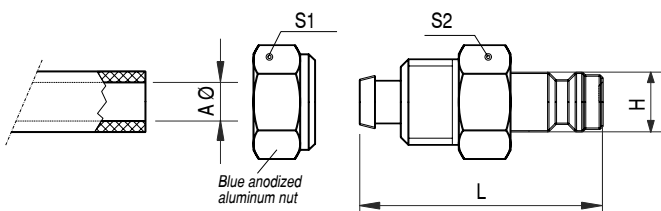
| Code | H Nominal Diameter (mm) | A Ø Hose Internal Diameter | C mm | F mm | L mm |
|--------------|-------------------------------|-------------------------------------|---------|---------|---------|
| 115.060042.0 | 09 | 3/8" | 19 | 13 | 35 |



Female

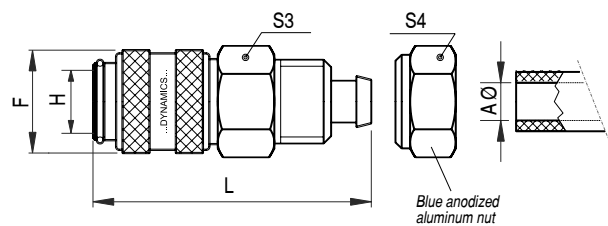
| Code | H Nominal Diameter (mm) | A Ø Hose Internal Diameter | C mm | F mm | L mm | S1 mm |
|--------------|-------------------------------|-------------------------------------|---------|---------|---------|----------|
| 112.060009.0 | 09 | 1/4" | 19 | 18.5 | 48 | 16 |
| 112.060010.0 | 09 | 5/16" | 19 | 18.5 | 48 | 16 |
| 112.060011.0 | 09 | 3/8" | 19 | 18.5 | 48 | 16 |

Hose Coupling with Nut



Male

| Code | H Nominal Diameter (mm) | A Ø Hose Internal Diameter | L mm | S1 mm | S2 mm |
|--------------|-------------------------------|-------------------------------------|---------|----------|----------|
| 115.060081.0 | 09 | 6 mm | 34 | 14 | 14 |



Female

| Code | H Nominal Diameter (mm) | A Ø Hose Internal Diameter | F mm | L mm | S3 mm | S4 mm |
|--------------|-------------------------------|-------------------------------------|---------|---------|----------|----------|
| 112.060071.0 | 09 | 4 mm | 16 | 43 | 14 | 12 |
| 112.060072.0 | 09 | 6 mm | 16 | 43 | 14 | 14 |