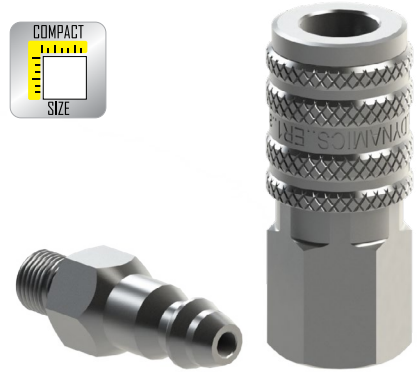


 **ER 01** (Série BFY20200AEJQR)

 **ER 01** (Serie BFY20200AEJQR)

 **ER 01** (BFY20200AEJQR Séries)



**Aplicações / Aplicaciones / Applications**



 **Propriedades**

- Principal fluido de passagem:** ar comprimido
- Conexão:** retraindo a luva do engate fêmea
- Desconexão:** retraindo a luva do engate fêmea (segurando o engate macho)
- Intercambiabilidade:** perfil Dynamics
- Material:** aço carbono de alta qualidade com peças de desgaste tratadas termicamente (pino)
- Tratamento superficial:** zincagem trivalente Cr(III)
- Vedação:** NBR (Borracha Nitrílica)
- Temperatura de trabalho:** -25°C (-13°F) até 80°C (176°F)
- Outras vedações e roscas sob consulta

 **Propiedades**

- Principal fluido de pasaje:** aire comprimido
- Conexión:** retracción del casco Hembra
- Desconexión:** retracción del casco Hembra (sosteniendo el acople macho)
- Intercambiabilidad:** perfil Dynamics
- Material:** acero al carbono de alta calidad con piezas de desgaste tratadas térmicamente (manguito)
- Tratamiento superficial:** cincado trivalente Cr(III)
- Sello:** NBR (Goma de Nitrilo)
- Temperatura de trabajo:** -25°C (-13°F) hasta 80°C (176°F)
- Otros sellos y roscas bajo consulta

 **Features**

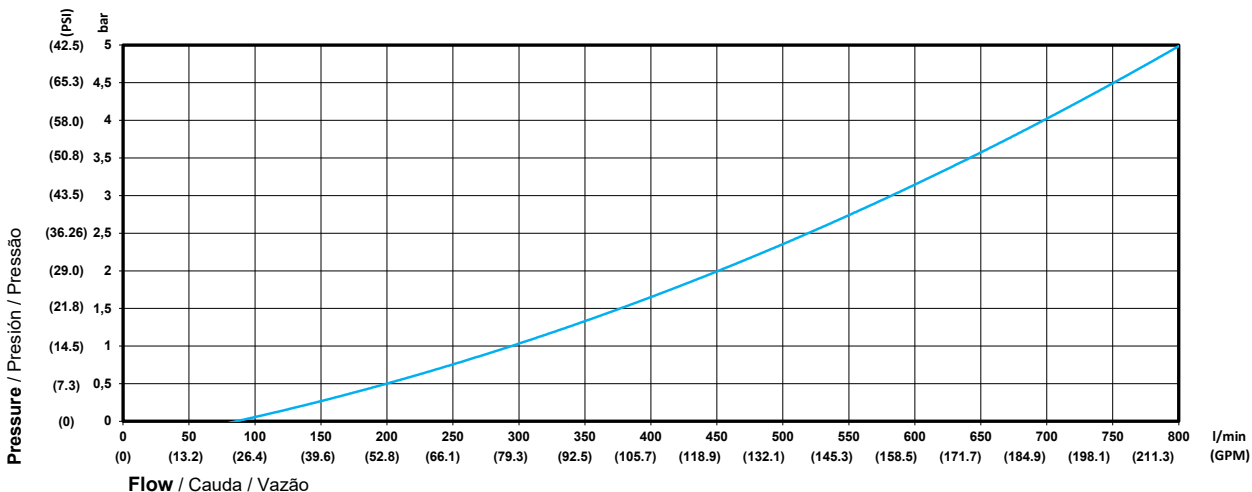
- Main fluid of passage:** compressed air
- Connection:** pulling back the female sleeve
- Disconnection:** pulling back the female sleeve (holding the male coupler)
- Interchangeability:** Dynamics profile
- Material:** high-grade carbon steel with heat treated wear parts (nipple)
- Surface treatment:** zinc plating Cr(III)
- Seals:** NBR (Nitrile Rubber)
- Working temperature:** -25°C (-13°F) to 80°C (176°F)
- Others seals and threads on request

**Informações Técnicas / Informaciones Técnicas / Technical Information**

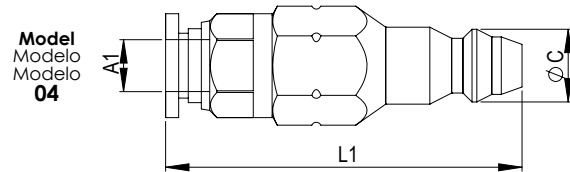
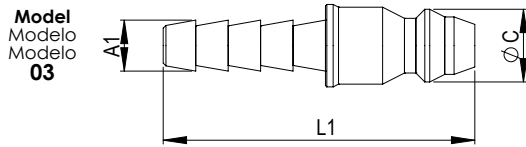
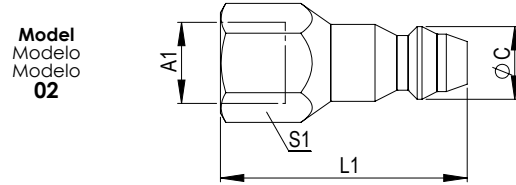
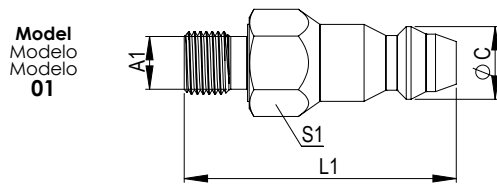
Diâmetro Nominal Diameter Nominal Nominal Diameter Size mm	Vazão Nominal com perda de pressão de 0,5 bar (7.25 PSI) Caudal Nominal con pérdida de presión de 0,5 bar (7.25 PSI) Rated Flow with 0,5 bar (7.25 PSI) of pressure drop L/min (GPM)	Pressão Máxima de Trabalho Presión Máj. de Trabajo Maximum Working Pressure bar (PSI)	Pressão de Ruptura Presión de Rotura Burst Pressure	
			Fêmea Hembra Female bar (PSI)	Conectado Conectado Connected bar (PSI)
12	200 (52.83)	16 (232)	140 (2,031)*	140 (2,031)*

\* Ensaio de ruptura feito hidraulicamente com conexão roscada / Prueba de rotura realizada hidráulicamente en la conexión roscada / Burst test is done hydraulically on the threaded connection

**Perda de Carga / Pérdida de Presión / Pressure Drop**



Tamanho  
Tamaño  
Size  
 12

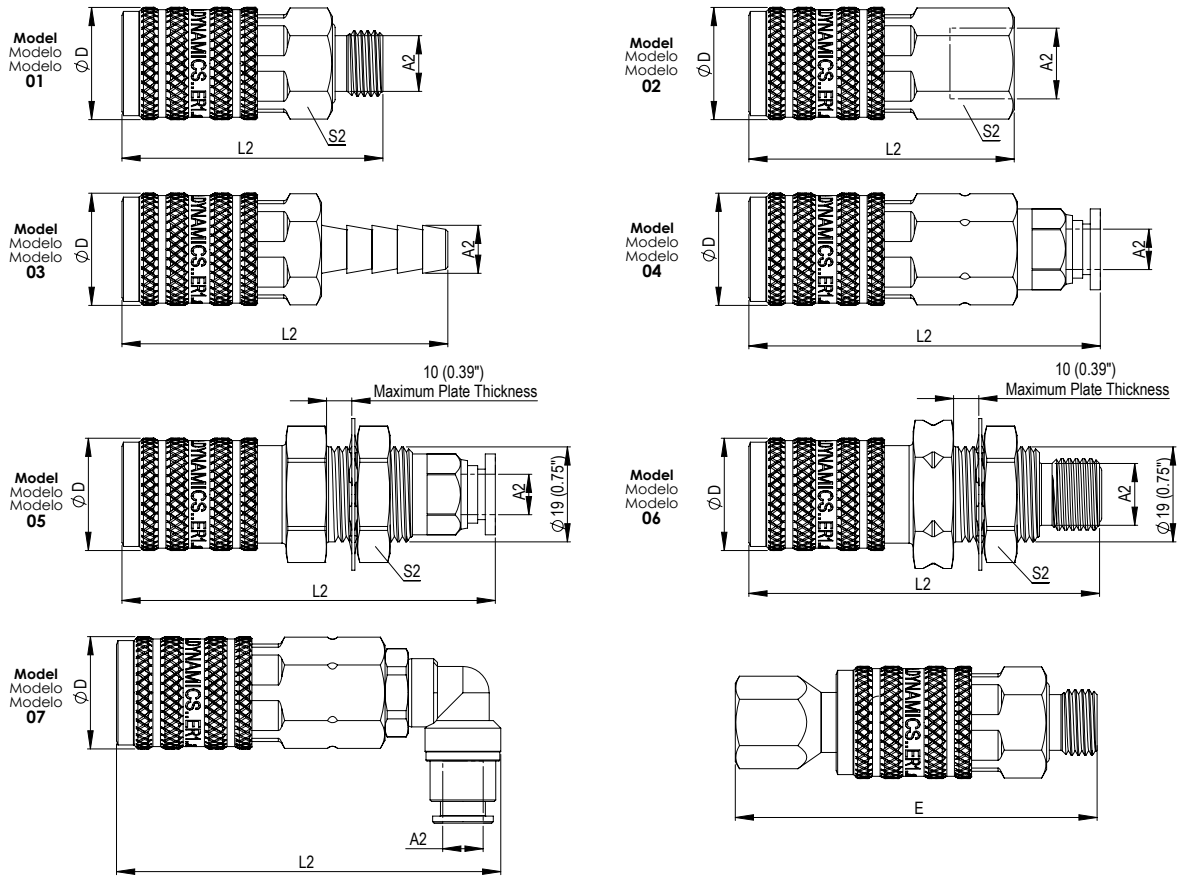


Macho / Macho / Male

Diâmetro Nominal Nominal Diameter mm (in)	Código Código Part Number	A1 Conexão Conexión Connection	Norma da Conexão Norma de la Conexión Connection Standard	Torque Torque Nm	L1 mm (in)	S1 mm (in)	ØC mm (in)	Peso Peso Weight g	Modelo Modelo Model	Estoque Stock Stock
12	102.020227.Y	1/8"NPT (ext.)	ANSI B1.20.1	14 - 20	36,0 (1.42")	12,7 (1/2")	11,2 (0.44")	20 (0.08)	01	🔍
	102.020228.Y	1/4"NPT (ext.)	ANSI B1.20.1	18 - 26	42,0 (1.65")	14,3 (9/16")	11,2 (0.44")	31 (0.07)	01	✓
	102.020229.Y	3/8"NPT (ext.)	ANSI B1.20.1	30 - 40	47,0 (1.85")	17,5 (11/16")	11,2 (0.44")	50 (0.11)	01	✓
	102.020230.B	1/8"BSP (ext.)	DIN 3852 Part 11	16 - 22	40,0 (1.57")	14,3 (9/16")	11,2 (0.44")	27 (0.06)	01	🔍
	102.020231.B	1/4"BSP (ext.)	DIN 3852 Part 11	24 - 32	45,0 (1.77")	17,5 (11/16")	11,2 (0.44")	38 (0.08)	01	✓
	102.020232.B	3/8"BSP (ext.)	DIN 3852 Part 11	40 - 56	49,0 (1.93")	20,7 (13/16")	11,2 (0.44")	59 (0.13)	01	✓
	102.020270.Y	1/2"NPT (ext.)	ANSI B1.20.1	52 - 66	51,0 (2.01")	22,2 (7/8")	11,2 (0.44")	77 (0.17)	01	✓
	102.020234.Y	1/8"NPT (int.)	ANSI B1.20.1	14 - 20	31,5 (1.24")	12,7 (1/2")	11,2 (0.44")	16 (0.04)	02	🔍
	102.020235.Y	1/4"NPT (int.)	ANSI B1.20.1	18 - 26	38,0 (1.50")	15,9 (5/8")	11,2 (0.44")	25 (0.06)	02	✓
	102.020237.Y	1/8"BSP (int.)	ANSI B1.20.1	16 - 22	32,0 (1.26")	12,7 (1/2")	11,2 (0.44")	16 (0.04)	02	🔍
	102.020238.Y	1/4"BSP (int.)	DIN 3852-2	24 - 32	38,5 (1.52")	15,9 (5/8")	11,2 (0.44")	24 (0.05)	02	✓
	102.020246.Y	3/8"NPT (int.)	ANSI B1.20.1	30 - 40	43,0 (1.69")	19,1 (3/4")	11,2 (0.44")	34 (0.07)	02	✓
	102.020249.Y	3/8"BSP (int.)	DIN 3852-2	40 - 56	42,0 (1.65")	20,7 (13/16")	11,2 (0.44")	35 (0.08)	02	🔍
	102.020224.Y	1/4" (Inside Hose Ø)	SAE J30 R2	-----	48,0 (1.89")	-----	11,2 (0.44")	18 (0.04)	03	✓
	102.020225.Y	5/16" (Inside Hose Ø)	SAE J30 R2	-----	48,0 (1.89")	-----	11,2 (0.44")	21 (0.05)	03	✓
	102.020226.Y	3/8" (Inside Hose Ø)	SAE J30 R2	-----	50,5 (1.99")	-----	11,2 (0.44")	26 (0.06)	03	✓
	102.020272.Y	1/2" (Inside Hose Ø)	SAE J30 R2	-----	53,5 (2.11")	-----	11,2 (0.44")	28	03	✓
	102.020258.F	Ø8 (Push-in Fitting)	SAE J844	-----	54,9 (2.16")	-----	11,2 (0.44")	40 (0.09)	04	🔍

(int.)	Rosca Interna / Rosca Interna / Internal Thread
(ext.)	Rosca Externa / Rosca Externa / External Thread

✓	Normal de Linha / Disponible / Available
🔍	Sob Consulta / Bajo Pedido / On request



Fêmea / Hembra / Female

Diâmetro Nominal Nominal Diameter mm (in)	Código Código Part Number	A2 Conexão Conexión Connection	Norma da Conexão Norma de la Conexión Connection Standard	Torque Torque Torque Nm	L2 mm (in)	S2 mm (in)	ØD mm (in)	E mm (in)	Peso Peso Weight g	Modelo Modelo Model	Estoque Stock Stock
12	111.020213.A	1/4"NPT (ext.)	ANSI B1.20.1	18 - 26	50,9 (2.00")	19,1 (3/4")	22,3 (0.88")	L1+L2-18(0.71")	79 (0.17)	01	✓
	111.020214.A	3/8"NPT (ext.)	ANSI B1.20.1	30 - 40	49,55 (1.95")	19,1 (3/4")	22,3 (0.88")	L1+L2-18(0.71")	81 (0.18)	01	✓
	111.020215.A	1/2"NPT (ext.)	ANSI B1.20.1	52 - 66	57,5 (2.26")	22,2 (7/8")	22,3 (0.88")	L1+L2-18(0.71")	116 (0.26)	01	✓
	111.020216.A	1/4"BSP (ext.)	DIN 3852 Part 11	24 - 32	51,7 (2.03")	19,1 (3/4")	22,3 (0.88")	L1+L2-18(0.71")	82 (0.18)	01	✓
	111.020217.A	3/8"BSP (ext.)	DIN 3852 Part 11	40 - 56	50,9 (2.00")	20,7 (13/16")	22,3 (0.88")	L1+L2-18(0.71")	87 (0.19)	01	✓
	111.020218.A	1/2"BSP (ext.)	DIN 3852 Part 11	72 - 88	50,5 (1.99")	25,4 (1")	22,3 (0.88")	L1+L2-18(0.71")	102 (0.22)	01	✓
	111.020219.A	1/4"NPT (int.)	ANSI B1.20.1	18 - 26	52,5 (2.07")	19,1 (3/4")	22,3 (0.88")	L1+L2-18(0.71")	92 (0.20)	02	✓
	111.020220.A	3/8"NPT (int.)	ANSI B1.20.1	30 - 40	54,4 (2.14")	19,1 (3/4")	22,3 (0.88")	L1+L2-18(0.71")	88 (0.19)	02	✓
	111.020221.A	1/4"BSP (int.)	DIN 3852-2	24 - 32	53,2 (2.09")	19,1 (3/4")	22,3 (0.88")	L1+L2-18(0.71")	92 (0.20)	02	✓
	111.020222.A	3/8"BSP (int.)	DIN 3852-2	40 - 56	53,8 (2.12")	20,7 (13/16")	22,3 (0.88")	L1+L2-18(0.71")	93 (0.21)	02	✓
	111.020241.A	1/2"NPT (int.)	ANSI B1.20.1	52 - 66	59,2 (2.33")	25,4 (1")	22,3 (0.88")	L1+L2-18(0.71")	127 (0.28)	02	✓
	111.020210.A	1/4" (Inside Hose Ø)	SAE J30 R2	-----	64,7 (2.55")	-----	22,3 (0.88")	L1+L2-18(0.71")	77 (0.17)	03	✓
	111.020211.A	5/16" (Inside Hose Ø)	SAE J30 R2	-----	64,5 (2.54")	-----	22,3 (0.88")	L1+L2-18(0.71")	79 (0.17)	03	✓
	111.020212.A	3/8" (Inside Hose Ø)	SAE J30 R2	-----	66,7 (2.62")	-----	22,3 (0.88")	L1+L2-18(0.71")	81 (0.18)	03	✓
	111.020258.E	Ø8 (Push-in Fitting)	SAE J844	-----	69,6 (2.74")	-----	22,3 (0.88")	L1+L2-18(0.71")	107 (0.24)	04	🔍
	111.020258.R	Ø8 (Push-in Fitting)	SAE J844	-----	73,9 (2.91")	23,8 (15/16")	22,3 (0.88")	L1+L2-18(0.71")	133 (0.29)	05	🔍
	111.020282.J	9/16" UNF ORFS (ext.)	SAE J1453	28 - 34	69,4 (2.73")	23,8 (15/16")	22,3 (0.88")	L1+L2-18(0.71")	142 (0.31)	06	✓
111.020286.Q	Ø8 (Push-in Fitting 90°)	SAE J844	-----	76,1 (3.00")	-----	22,3 (0.88")	L1+L2-18(0.71")	91 (0.20)	07	🔍	

(int.) Rosca Interna / Rosca Interna / Internal Thread  
 (ext.) Rosca Externa / Rosca Externa / External Thread

✓ Normal de Linha / Disponible / Available  
 🔍 Sob Consulta / Bajo Pedido / On request