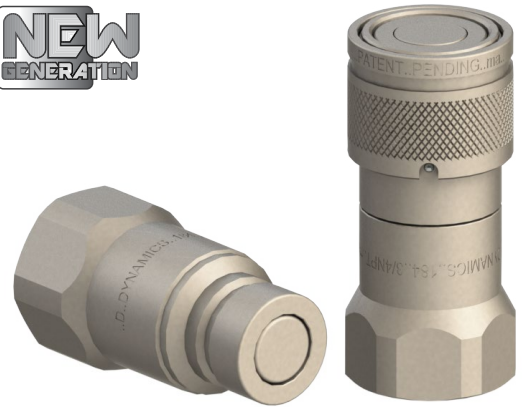


Face Plana (Série BH180000AP)

Cara Plana (Serie BH180000AP)

Flat Face (BH180000AP Séries)

Aplicações / Aplicaciones / Applications



Propriedades

Principal fluido de passagem: óleo hidráulico

Conexão: empurrando o engate macho

Desconexão: alinhar a ranhura da luva com as esferas de bloqueio e retrain a luva

Conexão sob pressão: não permitido

Intercambiabilidade: norma ISO 16028, tamanho 3,2 (1/8") não segue essa norma

Material: aço carbono de alta qualidade com peças de desgaste tratadas termicamente (luva e pino)

Tratamento superficial: banho de zinco níquel

Vedação: NBR (Borracha Nitrílica), Poliuretano e anel anti-extrusão em PTFE

Temperatura de trabalho: -25°C (-13°F) até 100°C (212°F)

Engate fêmea sem esferas de bloqueio, outras vedações e roscas sob consulta

Propiedades

Principal fluido de pasaje: empujando el acople macho

Conexión: empujando el acople macho

Desconexión: alinee la ranura del casco con las bolas de bloqueo, luego retraiga el casco

Conexión bajo presión: no permitido

Intercambiabilidad: norma ISO 16028, el tamaño 3,2 (1/8 ") no sigue este estándar

Material: acero al carbono de alta calidad con piezas de desgaste tratadas térmicamente (casco y mango)

Tratamiento superficial: baño de zinc níquel

Sello: NBR (Goma de Nitrilo), Poliuretano y anillo anti-extrusión de PTFE

Temperatura de trabajo: -25°C (-13°F) hasta 100°C (212°F)

Acople hembra sin bolas de bloqueo, otros sellos y roscas bajo consulta

Features

Main fluid of passage: hydraulic oil

Connection: pushing the male coupling

Disconnection: align the groove of the sleeve with the locking balls, then retract the sleeve

Connection under pressure: not allowed

Interchangeability: ISO 16028 standard, size 3,2 (1/8") does not follow this standard

Material: high-grade carbon steel with heat treated wear parts (sleeve and nipple)

Surface treatment: zinc nickel plating

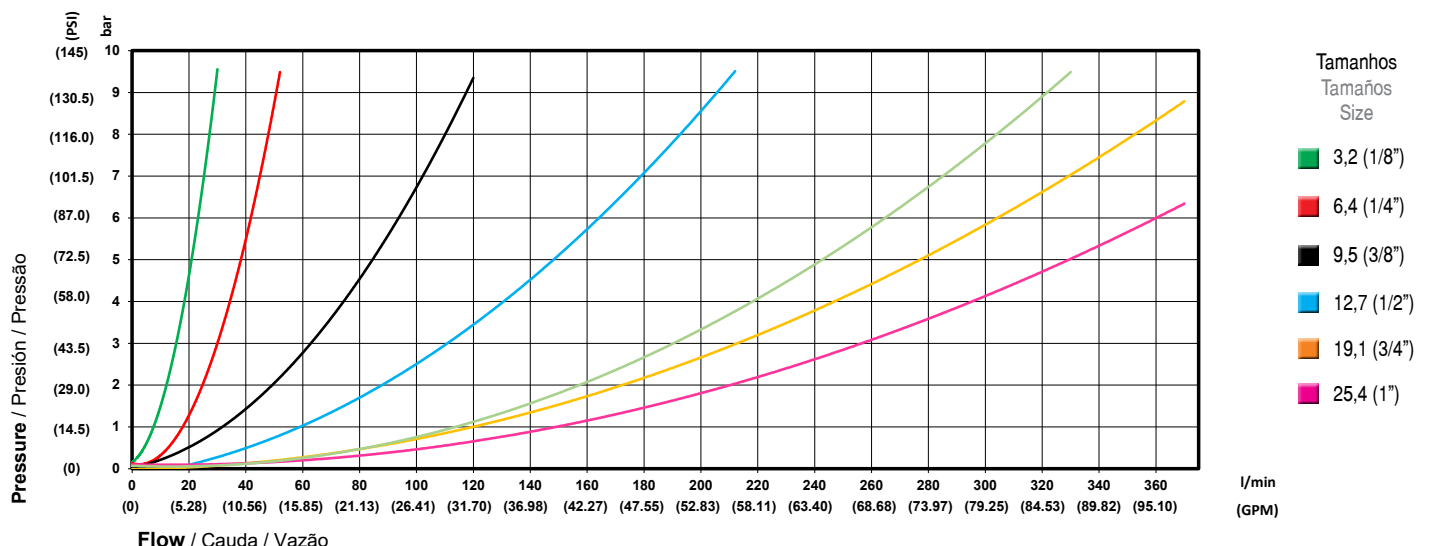
Seals: NBR (Nitrile Rubber), Polyurethane and backup ring in PTFE

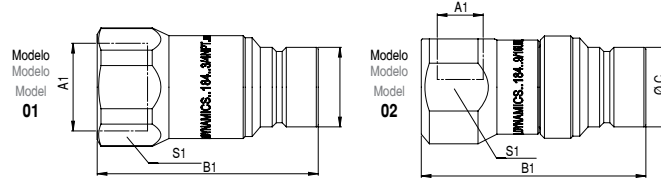
Working temperature: -25°C (-13°F) to 100°C (212°F)
Female coupling without locking balls, others seals and threads on request

Informações Técnicas / Informaciones Técnicas / Technical Information

Tamanho Tamaño Size mm (in)	Vazão Nominal com perda de pressão de 2 bar (29 PSI) Caudal Nominal con pérdida de presión de 2 bar (29 PSI) Rated Flow with 2 bar (29 PSI) of pressure drop L/min (GPM)	Pressão Máxima de Trabalho Presión Máx. de Trabajo Maximum Working Pressure bar (PSI)	Pressão de Ruptura Presión de Rotura Burst Pressure			Perda de óleo ao desconectar (1 bar) Pérdida de aceite al desconectar (1 bar) Fluid loss during disconnection (14 PSI) ml (cc)
			Fêmea Hembra Female bar (PSI)	Macho Macho Male bar (PSI)	Conectado Conectado Connected bar (PSI)	
3,2 (1/8")	10 (2.64)	350 (5,076)	1.200 (17,405)	1.380 (20,015)	1.200 (17,405)	0,007 (0.0002)
6,4 (1/4")	24 (6.34)	350 (5,076)	1.270 (18,420)	1.320 (19,145)	1.270 (18,420)	0,008 (0.0003)
9,5 (3/8")	50 (13.21)	350 (5,076)	1.200 (17,405)	1.280 (18,565)	1.160 (16,824)	0,008 (0.0003)
12,7 (1/2")	90 (23.78)	350 (5,076)	1.090 (15,809)	1.240 (17,985)	1.110 (16,099)	0,010 (0.0003)
15,9 (5/8")	148 (39.10)	350 (5,076)	1.020 (14,794)	1.380 (20,015)	1.280 (18,565)	0,014 (0.0005)
19,1 (3/4")	172 (45.44)	350 (5,076)	1.230 (17,840)	1.110 (16,099)	1.350 (19,580)	0,020 (0.0007)
25,4 (1")	220 (58.21)	350 (5,076)	1.080 (15,664)	1.000 (14,504)	1.020 (14,794)	0,030 (0.0010)

Perda de Carga / Pérdida de Pressão / Pressure Drop



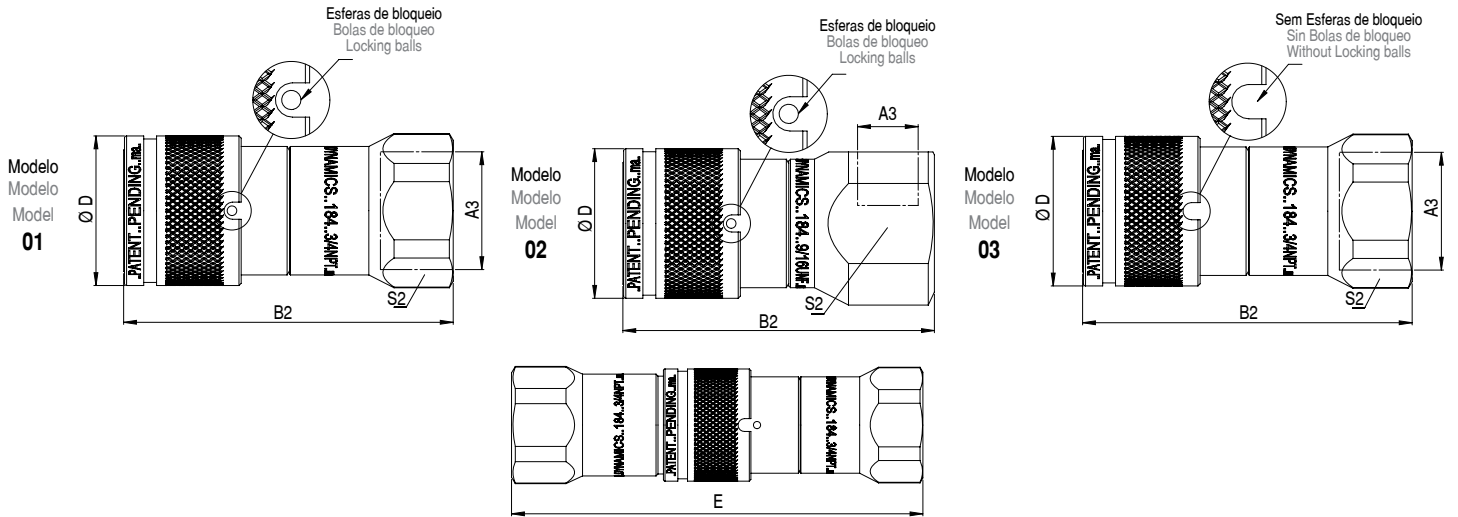


Macho / Macho / Male

Tamanho Tamaño Size mm (in)	Código Código Part Number	A1 Rosca Rosca Thread	Norma da Rosca Norma de la Rosca Thread Standard	Torque Torque Torque Nm	B1 mm (in)	S1 mm (in)	C Ø mm (in)	Peso Peso Weight g(lb)	Modelo Modelo Model	Estoque Stock Stock
3,2 (1/8")	115.181432.H	1/8" BSP (int.)	DIN 3852-2	16 - 22	42,6 (1.68")	15,9 (5/8")	11,6 (0.46")	39 (0.09)	01	🔍
	115.181439.H	1/4" BSP (ext.)	DIN 3852-2	24 - 32	46,8 (1.84")	19,1 (3/4")	11,6 (0.46")	50 (0.11)	01	🔍
	115.181442.H	9/16" UNF ORB (ext.)	SAE J1926	26 - 34	41,3 (1.63")	17,5 (11/16")	11,6 (0.46")	38 (0.08)	01	🔍
6,4 (1/4")	115.182448.B	1/4" NPT (int.)	ANSI B1.20.1	18 - 26	50,0 (1.97")	19,1 (3/4")	16,2 (0.64")	69 (0.15)	01	✓
	115.182449.B	1/4" BSP (int.)	DIN 3852-2	24 - 32	51,0 (2.01")	19,1 (3/4")	16,2 (0.64")	70 (0.15)	01	🔍
	115.182451.B	9/16" UNF ORB (int.)	SAE J1926	26 - 34	51,8 (2.04")	19,1 (3/4")	16,2 (0.64")	68 (0.15)	01	✓
9,5 (3/8")	115.183450.B	3/8" NPT (int.)	ANSI B1.20.1	30 - 40	60,3 (2.37")	22,2 (7/8")	19,7 (0.78")	107 (0.24)	01	🔍
	115.183451.B	3/8" BSP (int.)	DIN 3852-2	40 - 56	60,3 (2.37")	22,2 (7/8")	19,7 (0.78")	105 (0.23)	01	✓
	115.183452.B	1/2" NPT (int.)	ANSI B1.20.1	52 - 66	61,4 (2.42")	27,0 (1.11/16")	19,7 (0.78")	165 (0.36)	01	🔍
	115.183453.B	1/2" BSP (int.)	DIN 3852-2	72 - 88	63,1 (2.48")	27,0 (1.11/16")	19,7 (0.78")	160 (0.35)	01	✓
	115.183458.B	3/4" UNF ORB (int.)	SAE J1926	48 - 62	63,4 (2.50")	23,8 (15/16")	19,7 (0.78")	122 (0.27)	01	🔍
	115.183443.H	9/16" UNF ORB (int.)	SAE J1926	26 - 34	61,6 (2.42")	23,8 (15/16")	19,7 (0.78")	129 (0.28)	01	✓
	115.183449.H	1/2" BSP (ext.)	DIN 3852-2	72 - 88	59,1 (2.33")	28,6 (1.1/8")	19,7 (0.78")	128 (0.28)	01	🔍
	115.183462.BC	11/16" UN ORFS (ext.)	SAE J1453	32 - 38	78,1 (3.07")	22,2 (7/8")	19,7 (0.78")	155 (0.34)	01	🔍
	115.183463.BC	13/16" UN ORFS (ext.)	SAE J1453	42 - 52	80,1 (3.15")	22,2 (7/8")	19,7 (0.78")	162 (0.36)	01	🔍
	115.183467.BM	13/16" UN ORFS (ext.) BHS	SAE J1453	42 - 52	96,1 (3.78")	22,2 (7/8")	19,7 (0.78")	198 (0.44)	01	🔍
12,7 (1/2")	115.184452.B	1/2" NPT (int.)	ANSI B1.20.1	52 - 66	65,4 (2.57")	27,0 (1.11/16")	24,5 (0.96")	173 (0.38)	01	🔍
	115.184453.B	1/2" BSP (int.)	DIN 3852-2	72 - 88	66,4 (2.61")	27,0 (1.11/16")	24,5 (0.96")	173 (0.38)	01	✓
	115.184454.B	3/4" NPT (int.)	ANSI B1.20.1	68 - 88	68,5 (2.70")	34,0 (1.11/32")	24,5 (0.96")	245 (0.54)	01	✓
	115.184455.B	3/4" BSP (int.)	DIN 3852-2	120 - 150	68,5 (2.70")	33,4 (1.51/16")	24,5 (0.96")	243 (0.54)	01	✓
	115.184458.B	3/4" UNF ORB (int.)	SAE J1926	48 - 62	65,4 (2.57")	27,0 (1.11/16")	24,5 (0.96")	173 (0.38)	01	✓
	115.184459.B	7/8" UNF ORB (int.)	SAE J1926	58 - 74	69,9 (2.75")	28,6 (1.1/8")	24,5 (0.96")	225 (0.50)	01	✓
	115.184461.B	1.1/16" UN ORB (int.)	SAE J1926	90 - 116	70,0 (2.76")	33,4 (1.51/16")	24,5 (0.96")	231 (0.51)	01	✓
	115.184403.BN	1" UNS ORFS (ext.) BHS	SAE J1453	58 - 70	98,4 (3.87")	27,0 (1.11/16")	24,5 (0.96")	322 (0.71)	01	🔍
	115.184432.BD	3/4" UNF ORB (ext.)	SAE J1926	48 - 62	84,9 (3.89")	27,0 (1.11/16")	24,5 (0.96")	229 (0.50)	01	🔍
	115.184438.BD	M22x1,50 L15 (ext.)	ISO 8434-1-L	74 - 96	84,9 (3.89")	27,0 (1.11/16")	24,5 (0.96")	221 (0.49)	01	🔍
	115.184443.BN	M22x1,50 L15 (ext.) BHS	ISO 8434-1-L	74 - 96	110,8 (4.36")	27,0 (1.11/16")	24,5 (0.96")	307 (0.68)	01	🔍
	115.184452.BN	13/16" UN ORFS (ext.) BHS	SAE J1453	42 - 52	101,9 (4.01")	27,0 (1.11/16")	24,5 (0.96")	276 (0.61)	01	🔍
	115.184457.BQ	1.3/16" UN ORFS (ext.) BHS	SAE J1453	106 - 134	115,5 (4.55")	33,4 (1.51/16")	24,5 (0.96")	465 (1.03)	01	🔍
	115.184461.BN	7/8" UNF JIC (ext.) BHS	SAE J514	77 - 85	112,2 (4.42")	27,0 (1.11/16")	24,5 (0.96")	315 (0.69)	01	🔍
	115.184466.BD	M24x1,50 S16 (ext.)	ISO 8434-1-S	82 - 108	86,9 (3.42")	27,0 (1.11/16")	24,5 (0.96")	237 (0.52)	01	🔍
	115.184470.BN	M24x1,50 S16 (ext.) BHS	ISO 8434-1-S	82 - 108	120,4 (4.74")	27,0 (1.11/16")	24,5 (0.96")	385 (0.85)	01	🔍
	115.184476.BD	M22x1,50 ORB (ext.)	ISO 6149	74 - 96	90,8 (3.57")	27,0 (1.11/16")	24,5 (0.96")	262 (0.58)	01	🔍
15,9 (5/8")	115.184448.H	9/16" UNF ORB (int.) 90°	SAE J1926	26 - 34	69,2 (2.72")	31,8 (1.1/4")	24,5 (0.96")	254 (0.56)	02	🔍
	115.184449.H	3/4" UNF ORB (int.) 90°	SAE J1926	48 - 62	73,9 (2.91")	35,0 (1.3/8")	24,5 (0.96")	345 (0.76)	02	🔍
	115.185454.B	3/4" NPT (int.)	ANSI B1.20.1	68 - 88	76,9 (3.03")	35,0 (1.3/8")	27,0 (1.06")	279 (0.62)	01	🔍
19,1 (3/4")	115.185455.B	3/4" BSP (int.)	DIN 3852-2	120 - 150	76,9 (3.03")	33,4 (1.51/16")	27,0 (1.06")	263 (0.58)	01	🔍
	115.185456.B	1.1/16" UN ORB (int.)	SAE J1926	90 - 116	78,8 (3.10")	33,4 (1.51/16")	27,0 (1.06")	263 (0.58)	01	🔍
	115.186454.B	3/4" NPT (int.)	ANSI B1.20.1	68 - 88	83,1 (3.27")	35,0 (1.3/8")	29,9 (1.18")	409 (0.90)	01	✓
25,40 (1")	115.186455.B	3/4" BSP (int.)	DIN 3852-2	120 - 150	83,1 (3.27")	35,0 (1.3/8")	29,9 (1.18")	407 (0.90)	01	🔍
	115.186456.B	1.1/16" UN ORB (int.)	SAE J1926	90 - 116	85,0 (3.34")	35,0 (1.3/8")	29,9 (1.18")	412 (0.91)	01	✓
	115.186457.B	1" BSP (int.)	DIN 3852-2	200 - 240	85,3 (3.36")	35,0 (1.3/8")	29,9 (1.18")	367 (0.81)	01	✓
	115.186458.B	1" NPT (int.)	ANSI B1.20.1	82 - 108	86,3 (3.40")	35,0 (1.3/8")	29,9 (1.18")	384 (0.85)	01	✓
	115.186461.B	1.5/16" UN ORB (int.)	SAE J1926	128 - 160	86,3 (3.40")	35,0 (1.3/8")	29,9 (1.18")	399 (0.88)	01	🔍
	115.186442.H	1.1/16" UN JIC (int.) 90°	SAE J514	107 - 119	106,9 (4.21")	33,4 (1.51/16")	29,9 (1.18")	627 (1.38)	02	🔍
	115.187456.B	1" NPTF (int.)	ANSI B1.20.3	82 - 108	92,1 (3.63")	41,3 (1.5/8")	36,0 (1.42")	599 (1.32)	01	🔍
25,40 (1")	115.187457.B	1" BSP (int.)	DIN 3852-2	200 - 240	92,1 (3.63")	41,3 (1.5/8")	36,0 (1.42")	589 (1.30)	01	🔍
	115.187458.B	1.1/4" NPT (int.)	ANSI B1.20.1	94 - 126	95,2 (3.75")	42,9 (1.11/16")	36,0 (1.42")	659 (1.45)	01	🔍
	115.187459.B	1.1/4" BSP (int.)	DIN 3852-2	320 - 380	95,2 (3.75")	42,9 (1.11/16")	36,0 (1.42")	644 (1.42)	01	🔍
	115.187461.B	1.5/16" UN ORB (int.)	DIN 3852-2	128 - 160	92,2 (3.63")	41,3 (1.5/8")	36,0 (1.42")	579 (1.28)	01	🔍

(int.)	Rosca Interna / Rosca Interna / Internal Thread
(ext.)	Rosca Externa / Rosca Externa / External Thread
BHS	Rosca para chapa sem porca / Rosca para chapa sin tuerca / Bulkhead without nut

✓	Normal de Linha / Disponible / Available
🔍	Sob Consulta / Bajo Pedido / On request



Fêmea / Hembra / Female

Tamanho Tamaño Size mm (in)	Código Código Part Number	A3 Rosca Rosca Thread	Norma da Rosca Norma de la Rosca Thread Standard	Torque Torque Torque Nm	B2 mm (in)	S2 mm (in)	D Ø mm (in)	E mm (in)	Peso Peso Wight g(lb)	Modelo Modelo Model	Estoque Stock Stock
3,2 (1/8")	117.181416.A	1/8" BSP (int.)	DIN 3852-2	16 - 22	40,5 (1.59")	14,3 (9/16")	19,1 (0.75")	L1 + L2 -7,5 (0.30")	48 (0.11)	01	🔍
	117.181419.A	1/4" BSP (int.)	DIN 3852-2	24 - 32	45,0 (1.77")	14,3 (9/16")	19,1 (0.75")	L1 + L2 -7,5 (0.30")	54 (0.11)	01	🔍
	117.181421.A	7/16" UNF ORB (int.)	SAE J1926	16 - 22	42,0 (1.65")	15,9 (5/8")	19,1 (0.75")	L1 + L2 -7,5 (0.30")	52 (0.12)	01	🔍
	117.181475.AA	7/16" UNF JIC (ext.)	SAE J514	16 - 22	60,8 (2.39")	15,9 (5/8")	19,1 (0.75")	L1 + L2 -7,5 (0.30")	66 (0.15)	01	🔍
	117.181488.AA	1/4" BSP (ext.)	DIN 3852-2	24 - 32	62,2 (2.45")	15,9 (5/8")	19,1 (0.75")	L1 + L2 -7,5 (0.30")	85 (0.19)	01	🔍
6,4 (1/4")	117.182728.A	1/4" NPT (int.)	ANSI B1.20.1	18 - 26	50,7 (1.99)	19,1 (3/4")	25,4 (1.00")	L1 + L2 -11 (0.45")	103 (0.23)	01	✅
	117.182729.A	1/4" BSP (int.)	DIN 3852-2	24 - 32	50,7 (1.99)	19,1 (3/4")	25,4 (1.00")	L1 + L2 -11 (0.45")	102 (0.22)	01	🔍
	117.182731.A	9/16" UNF ORB (int.)	SAE J1926	26 - 34	50,7 (1.99)	17,5 (11/16")	25,4 (1.00")	L1 + L2 -11 (0.45")	93 (0.21)	01	✅
	117.183732.A	3/8" NPT (int.)	ANSI B1.20.1	30 - 40	66,9 (2.63")	23,8 (15/16")	30,0 (1.18")	L1 + L2 -15 (0.61")	200 (0.44)	01	✅
	117.183733.A	1/2" NPT (int.)	ANSI B1.20.1	52 - 66	68,1 (2.68")	25,4 (1")	30,0 (1.18")	L1 + L2 -15 (0.61")	197 (0.43)	01	✅
9,5 (3/8")	117.183734.A	3/8" BSP (int.)	DIN 3852-2	40 - 56	67,2 (2.65")	21,0 (27/32")	30,0 (1.18")	L1 + L2 -15 (0.61")	187 (0.41)	01	🔍
	117.183735.A	1/2" BSP (int.)	DIN 3852-2	72 - 88	67,6 (2.66")	25,4 (1")	30,0 (1.18")	L1 + L2 -15 (0.61")	192 (0.42)	01	🔍
	117.183736.A	3/4" UNF ORB (int.)	SAE J1926	48 - 62	68,1 (2.68")	23,8 (15/16")	30,0 (1.18")	L1 + L2 -15 (0.61")	187 (0.41)	01	✅
	117.183740.AC	M22x1,50 L15 (ext.)	ISO 8434-1L	74 - 96	86,7 (3.41")	22,2 (7/8")	30,0 (1.18")	L1 + L2 -15 (0.61")	232 (0.51)	01	🔍
	117.183748.AM	M18x1,50 L12 (ext.) BHS	ISO 8434-1L	44 - 62	109,9 (4.33")	22,2 (7/8")	30,0 (1.18")	L1 + L2 -15 (0.61")	264 (0.58)	01	🔍
	117.183762.AC	11/16" UN ORFS (ext.)	SAE J1453	32 - 38	85,0 (3.35")	22,2 (7/8")	30,0 (1.18")	L1 + L2 -15 (0.61")	232 (0.51)	01	🔍
	117.183763.AC	13/16" UN ORFS (ext.)	SAE J1453	42 - 52	87,0 (3.43")	22,2 (7/8")	30,0 (1.18")	L1 + L2 -15 (0.61")	239 (0.53)	01	🔍
	117.183767.AM	13/16" UN ORFS (ext.) BHS	SAE J1453	42 - 52	103,0 (4.06")	22,2 (7/8")	30,0 (1.18")	L1 + L2 -15 (0.61")	275 (0.61)	01	🔍
	117.184731.A	1/2" NPTF (int.)	ANSI B1.20.3	52 - 66	75,1 (2.95")	28,6 (1.18")	35,0 (1.38")	L1 + L2 -16 (0.65")	291 (0.64)	01	✅
	117.184732.A	1/2" BSP (int.)	DIN 3852-2	72 - 88	75,1 (2.95")	28,6 (1.18")	35,0 (1.38")	L1 + L2 -16 (0.65")	287 (0.63)	01	🔍
12,7 (1/2")	117.184733.A	3/4" NPTF (int.)	ANSI B1.20.3	68 - 88	77,0 (3.03")	33,4 (1.516")	35,0 (1.38")	L1 + L2 -16 (0.65")	311 (0.69)	01	✅
	117.184734.A	3/4" BSP (int.)	DIN 3852-2	120 - 150	75,8 (2.98")	33,4 (1.516")	35,0 (1.38")	L1 + L2 -16 (0.65")	302 (0.67)	01	🔍
	117.184735.A	3/4" UNF ORB (int.)	SAE J1926	48 - 62	74,6 (2.94")	25,4 (1")	35,0 (1.38")	L1 + L2 -16 (0.65")	275 (0.61)	01	✅
	117.184736.A	7/8" UNF ORB (int.)	SAE J1926	58 - 74	76,1 (2.99")	26,0 (1.132")	35,0 (1.38")	L1 + L2 -16 (0.65")	295 (0.65)	01	🔍
	117.184737.A	1.1/16" UN ORB (int.)	SAE J1926	90 - 116	77,6 (3.05")	33,4 (1.516")	35,0 (1.38")	L1 + L2 -16 (0.65")	302 (0.67)	01	✅
	117.184738.AD	M22x1,50 L15 (ext.)	ISO 8434-1L	74 - 96	94,1 (3.70")	22,2 (7/8")	35,0 (1.38")	L1 + L2 -16 (0.65")	325 (0.72)	01	🔍
	117.184752.AN	13/16" UN ORFS (ext.) BHS	SAE J1453	42 - 52	111,1 (4.37")	23,8 (15/16")	35,0 (1.38")	L1 + L2 -16 (0.65")	367 (0.81)	01	🔍
	117.184753.AN	1" UNS ORFS (ext.) BHS	SAE J1453	58 - 70	115,6 (4.55")	28,6 (1.18")	35,0 (1.38")	L1 + L2 -16 (0.65")	415 (0.91)	01	🔍
	117.184757.AD	7/8" UNF JIC (int.)	SAE J514	58 - 74	101,4 (3.99")	22,2 (7/8")	35,0 (1.38")	L1 + L2 -16 (0.65")	340 (0.75)	01	🔍
	117.184761.AD	7/8" UNF JIC (ext.) BHS	SAE J514	77 - 85	21,35 (4.78")	23,8 (15/16")	35,0 (1.38")	L1 + L2 -16 (0.65")	392 (0.86)	01	🔍
15,9 (5/8")	117.184706.AD	3/4" UNF ORB (int.) 90°	SAE J1926	48 - 62	111,2 (4.38")	23,8 (15/16")	35,0 (1.38")	L1 + L2 -16 (0.65")	407 (0.90)	02	🔍
	117.184737.P	1.1/16" UN ORB (int.) WLB	SAE J1926	90 - 116	77,6 (3.05")	33,4 (1.516")	35,0 (1.38")	L1 + L2 -16 (0.65")	302 (0.67)	03	🔍
	117.185737.A	3/4" NPTF (int.)	ANSI B1.20.3	68 - 88	82,0 (3.23")	30,0 (1.316")	38,1 (1.50")	L1 + L2 -17 (0.67")	357 (0.79)	01	🔍
	117.185738.A	3/4" BSP (int.)	DIN 3852-2	120 - 150	81,2 (3.19")	30,0 (1.316")	38,1 (1.50")	L1 + L2 -17 (0.67")	347 (0.76)	01	🔍
	117.185739.A	1.1/16" UN ORB (int.)	SAE J1926	90 - 116	82,0 (3.23")	30,0 (1.316")	38,1 (1.50")	L1 + L2 -17 (0.67")	342 (0.75)	01	🔍
	117.185739.P	1.1/16" UN ORB (int.) WLB	SAE J1926	90 - 116	82,0 (3.23")	30,0 (1.316")	38,1 (1.50")	L1 + L2 -17 (0.67")	342 (0.75)	02	🔍

(int.)	Rosca Interna / Rosca Interna / Internal Thread
(ext.)	Rosca Externa / Rosca Externa / External Thread
BHS	Rosca para chapa sem porca / Rosca para chapa sin tuerca / Bulkhead without nut
WLB	Sem esferas de bloqueio / Sin bolas de bloqueio / Without locking balls

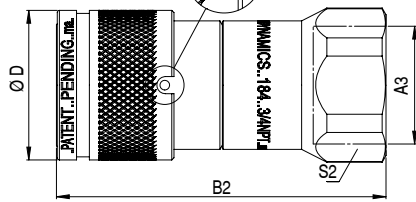
✅	Normal de Linha / Disponible / Available
🔍	Sob Consulta / Bajo Pedido / On request

Esferas de bloqueio
Bolas de bloqueio
Locking balls

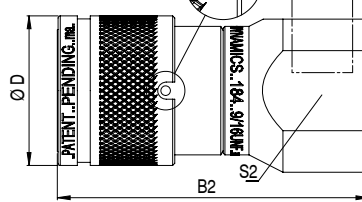
Esferas de bloqueio
Bolas de bloqueio
Locking balls

Sem Esferas de bloqueio
Sin Bolas de bloqueio
Without Locking balls

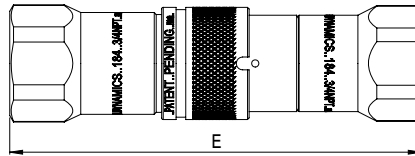
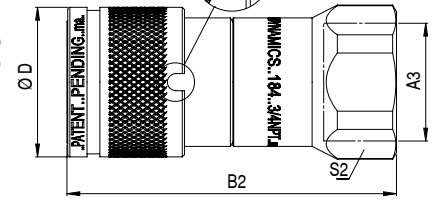
Modelo
Modelo
Model
01



Modelo
Modelo
Model
02



Modelo
Modelo
Model
03



Fêmea / Hembra / Female

Tamanho Tamaño Size mm (in)	Código Código Part Number	A3 Rosca Rosca Thread	Norma da Rosca Norma de la Rosca Thread Standard	Torque Torque Torque Nm	B2 mm (in)	S2 mm (in)	D Ø mm (in)	E mm (in)	Peso Peso Wight g(lb)	Modelo Modelo Model	Estoque Stock Stock
19,1 (3/4")	117.186738.A	3/4" NPTF (int.)	ANSI B1.20.3	68 - 88	87,6 (3.45")	31,8 (1.12")	41,3 (1.62")	L1 + L2 -20 (0.80")	464 (1.02)	01	✓
	117.186739.A	3/4" BSP (int.)	DIN 3852-2	120 - 150	86,6 (3.41")	31,8 (1.12")	41,3 (1.62")	L1 + L2 -20 (0.80")	449 (0.99)	01	🔍
	117.186741.A	1" NPTF (int.)	ANSI B1.20.3	82 - 108	88,7 (3.49")	35,0 (1.38")	41,3 (1.62")	L1 + L2 -20 (0.80")	499 (1.10)	01	✓
	117.186742.A	1" BSP (int.)	DIN 3852-2	200 - 240	88,2 (3.47")	35,0 (1.38")	41,3 (1.62")	L1 + L2 -20 (0.80")	485 (1.07)	01	🔍
	117.186743.A	1.1/16" UN ORB (int.)	SAE J1926	90 - 116	87,7 (3.45")	31,8 (1.12")	41,3 (1.62")	L1 + L2 -20 (0.80")	446 (0.98)	01	✓
	117.186745.A	1.5/16" UN ORB (int.)	DIN 3852-2	128 - 160	88,2 (3.47")	35,0 (1.38")	41,3 (1.62")	L1 + L2 -20 (0.80")	489 (1.08)	01	🔍
	117.186726.A	1.1/16" UN JIC (int.) 90°	SAE J514	107 - 119	96,6 (3.80")	33,0 (1.5/16")	41,3 (1.62")	L1 + L2 -20 (0.80")	698 (1.54)	02	🔍
25,40 (1")	117.186743.P	1.1/16" UN ORB (int.) WLB	SAE J1926	90 - 116	87,7 (3.45")	31,8 (1.12")	41,3 (1.62")	L1 + L2 -20 (0.80")	446 (0.98)	03	✓
	117.187744.A	1" NPTF (int.)	ANSI B1.20.3	82 - 108	91,2 (3.59")	39,7 (1.9/16")	49,2 (1.94")	L1 + L2 -21 (0.85")	693 (1.53)	01	🔍
	117.187745.A	1" BSP (int.)	DIN 3852-2	200 - 240	91,2 (3.59")	39,7 (1.9/16")	49,2 (1.94")	L1 + L2 -21 (0.85")	676 (1.49)	01	🔍
	117.187746.A	1.1/4" NPT (int.)	ANSI B1.20.1	94 - 126	91,7 (3.61")	46,1 (1.13/16")	49,2 (1.94")	L1 + L2 -21 (0.85")	761 (1.68)	01	🔍
	117.187747.A	1.1/4" BSP (int.)	DIN 3852-2	320 - 380	91,7 (3.61")	46,1 (1.13/16")	49,2 (1.94")	L1 + L2 -21 (0.85")	777 (1.71)	01	✓
	117.187748.A	1.5/16" UN ORB (int.)	DIN 3852-2	128 - 160	91,2 (3.59")	41,3 (1.5/8")	49,2 (1.94")	L1 + L2 -21 (0.85")	697 (1.54)	01	🔍
	117.187754.A	1.1/2" BSP (int.)	DIN 3852-2	320 - 380	93,2 (3.67")	55,6 (2.3/16")	49,2 (1.94")	L1 + L2 -21 (0.85")	955 (2.11)	01	🔍

(int.)	Rosca Interna / Rosca Interna / Internal Thread
(ext.)	Rosca Externa / Rosca Externa / External Thread
BHS	Rosca para chapa sem porca / Rosca para chapa sin tuerca / Bulkhead without nut
WLB	Sem esferas de bloqueio / Sin bolas de bloqueio / Without locking balls

✓	Normal de Linha / Disponible / Available
🔍	Sob Consulta / Bajo Pedido / On request