

Acessórios / Accesorios / Accessories

Protetor com Tapa (Série 245000DQ)

Protector con Tapa (Serie 245000DQ)

Automatic Dust Caps (245000DQ Series)

Aplicações / Aplicaciones / Applications



Propriedades

Principal aplicação: proteger a fêmea, quando desconectada, de sujeira e batidas

Material: nylon

Propiedades

Principal aplicación: proteger, cuando desconectado, la parte hembra del acople rápido de suciedad y golpes

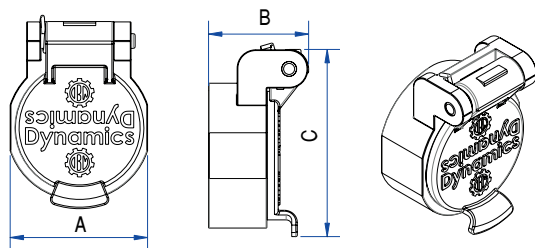
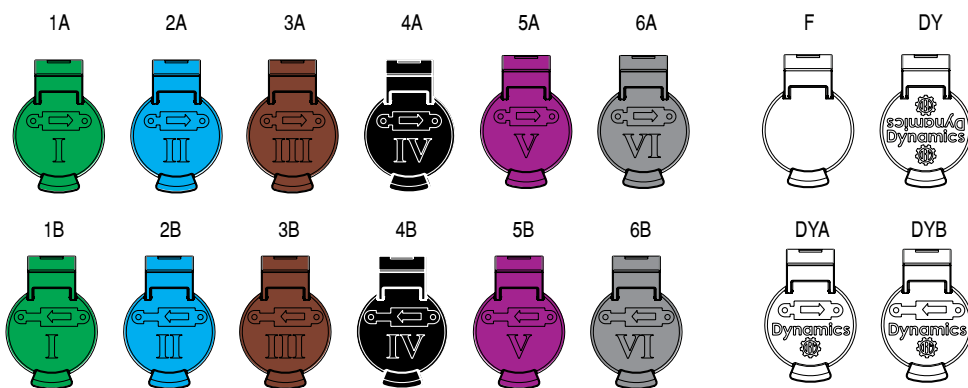
Material: nylon

Features

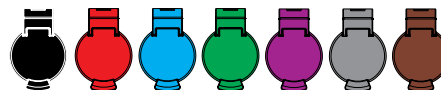
Main application: protect the contact surface against dirt and contamination as well as external damage

Material: nylon

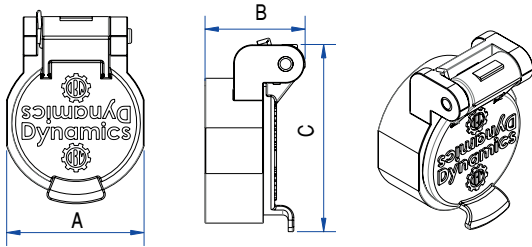
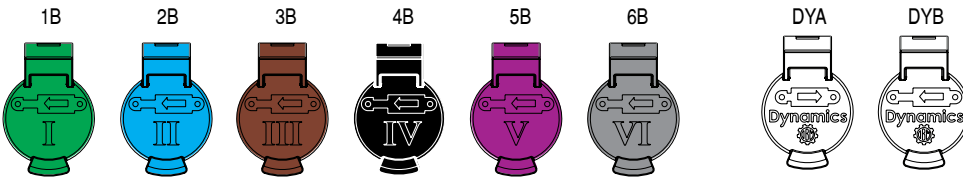
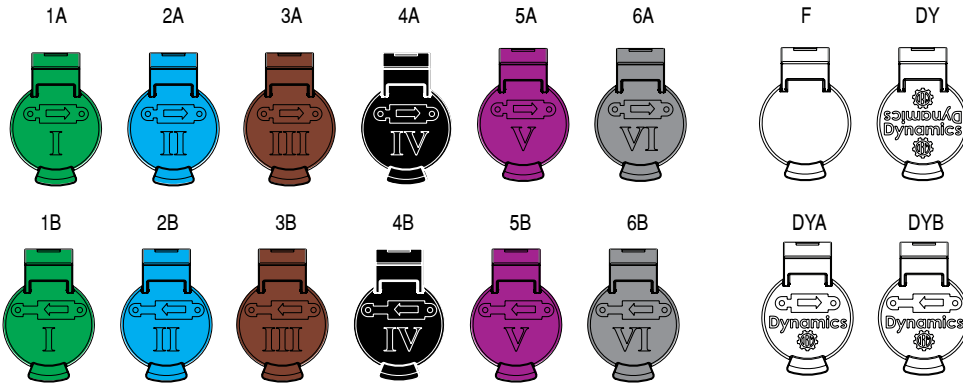
Modelos / Modelos / Models



Cores / Colores / Colors



Série Serie Series	Tamanho Tamaño Size mm (in)	Código Código Code	Cor da Tapa Color de la Tapa Cap Color	Modelo Modelo Model	A mm (in)	B mm (in)	C mm (in)	Peso Peso Wight g	Estoque Stock Stock
ISO A Push Pull Modelo 1 / Modelo 1 / Model 1 Ø 35,0 mm	12,7 (1/2")	119.245016.Q		DY	37,0 (1.457")	27,0 (1.063")	50,4 (1.985")	13	✓
		119.245020.Q		F	37,0 (1.457")	27,0 (1.063")	50,4 (1.985")	13	✓
		119.245030.Q		F	37,0 (1.457")	27,0 (1.063")	50,4 (1.985")	13	✓
		119.245040.Q		F	37,0 (1.457")	27,0 (1.063")	50,4 (1.985")	13	✓
		119.245070.Q		F	37,0 (1.457")	27,0 (1.063")	50,4 (1.985")	13	✓
		119.245050.Q		F	37,0 (1.457")	27,0 (1.063")	50,4 (1.985")	13	✓
		119.245051.Q		1A	37,0 (1.457")	27,0 (1.063")	50,4 (1.985")	13	✓
		119.245061.Q		1B	37,0 (1.457")	27,0 (1.063")	50,4 (1.985")	13	✓
		119.245052.Q		2A	37,0 (1.457")	27,0 (1.063")	50,4 (1.985")	13	✓
		119.245062.Q		2B	37,0 (1.457")	27,0 (1.063")	50,4 (1.985")	13	✓
		119.245053.Q		3A	37,0 (1.457")	27,0 (1.063")	50,4 (1.985")	13	✓
		119.245063.Q		3B	37,0 (1.457")	27,0 (1.063")	50,4 (1.985")	13	✓
ISO A Montado no Comando Hidráulico (Standard Premium) ISO A Montado en el Comando Hidráulico (Standard Premium) ISO A Mounted on The Hydraulic Control Valve (Standard Premium) Ø 35,0 mm	12,7 (1/2")	119.245054.Q		4A	37,0 (1.457")	27,0 (1.063")	50,4 (1.985")	13	✓
		119.245064.Q		4B	37,0 (1.457")	27,0 (1.063")	50,4 (1.985")	13	✓
		119.245055.Q		5A	37,0 (1.457")	27,0 (1.063")	50,4 (1.985")	13	✓
		119.245065.Q		5B	37,0 (1.457")	27,0 (1.063")	50,4 (1.985")	13	✓
		119.245056.Q		6A	37,0 (1.457")	27,0 (1.063")	50,4 (1.985")	13	✓
		119.245066.Q		6B	37,0 (1.457")	27,0 (1.063")	50,4 (1.985")	13	✓
Face Plana Standard Cara Plana Standard Flat Face Standard Ø 35,0 mm									



Cores / Colores / Colors



Série Serie Series	Tamanho Tamaño Size mm (in)	Código Código Code	Cor da Tapa Color dela Tapa Cap Color	Modelo Modelo Model	A mm (in)	B mm (in)	C mm (in)	Peso Peso Wight g	Estoque Stock Stock
ISO A Push Pull Modelo 2 / Modelo 2 / Model 2 Ø 38,0 mm	12,7 (1/2")	119.245016.R	■	DY	39,3 (1.548")	28,5 (1.123")	50,4 (1.985")	15	✓
		119.245020.R	■	F	39,3 (1.548")	28,5 (1.123")	50,4 (1.985")	15	⊗
		119.245030.R	■	F	39,3 (1.548")	28,5 (1.123")	50,4 (1.985")	15	⊗
119.245040.R		■	F	39,3 (1.548")	28,5 (1.123")	50,4 (1.985")	15	⊗	
ISO A Montado no Comando Hidráulico (Standard Premium)		119.245050.R	■	F	37,0 (1.457")	27,0 (1.063")	50,4 (1.985")	15	✓
ISO A Montado en el Comando Hidráulico (Standard Premium)		119.245070.R	■	F	39,3 (1.548")	28,5 (1.123")	50,4 (1.985")	15	⊗
ISO A Montado en el Comando Hidráulico (Standard Premium)		119.245051.R	■	1A	39,3 (1.548")	28,5 (1.123")	50,4 (1.985")	15	⊗
ISO A Mounted on The Hydraulic Control Valve (Standard Premium)		119.245061.R	■	1B	39,3 (1.548")	28,5 (1.123")	50,4 (1.985")	15	⊗
ISO A Mounted on The Hydraulic Control Valve (Standard Premium)		119.245052.R	■	2A	39,3 (1.548")	28,5 (1.123")	50,4 (1.985")	15	⊗
ISO A Mounted on The Hydraulic Control Valve (Standard Premium)		119.245062.R	■	2B	39,3 (1.548")	28,5 (1.123")	50,4 (1.985")	15	⊗
ISO A Mounted on The Hydraulic Control Valve (Standard Premium)		119.245053.R	■	3A	39,3 (1.548")	28,5 (1.123")	50,4 (1.985")	15	⊗
Face Plana Montado no Comando Hidráulico		119.245063.R	■	3B	39,3 (1.548")	28,5 (1.123")	50,4 (1.985")	15	⊗
Cara Plana Montado en el Comando Hidráulico (Standard Premium)	119.245054.R	■	4A	39,3 (1.548")	28,5 (1.123")	50,4 (1.985")	15	⊗	
Cara Plana Montado en el Comando Hidráulico (Standard Premium)	119.245064.R	■	4B	39,3 (1.548")	28,5 (1.123")	50,4 (1.985")	15	⊗	
Flat Face Mounted on The Hydraulic Control Valve (Standard Premium)	119.245055.R	■	5A	39,3 (1.548")	28,5 (1.123")	50,4 (1.985")	15	⊗	
Flat Face Mounted on The Hydraulic Control Valve (Standard Premium)	119.245065.R	■	5B	39,3 (1.548")	28,5 (1.123")	50,4 (1.985")	15	⊗	
Flat Face Mounted on The Hydraulic Control Valve (Standard Premium)	119.245056.R	■	6A	39,3 (1.548")	28,5 (1.123")	50,4 (1.985")	15	⊗	
Flat Face Mounted on The Hydraulic Control Valve (Standard Premium)	119.245066.R	■	6B	39,3 (1.548")	28,5 (1.123")	50,4 (1.985")	15	⊗	