

Multi-Coupling 2 Lines with an Electric Socket
(Q280200CP Series)

Multi-Kupplung 2 Leitungen mit Steckdose
(Serie Q280200CP)

Multi-Accouplement 2 Lignes avec Prise Électrique
(Série Q280200CP)



Applications / Anwendung / Applications



Features

Description: mutual connection of 2 hydraulic lines with electrical connection. Available sizes: 3/8"

Main fluid of passage: hydraulic oil

Connection: pressing the red button to allow the movement of the handle, followed by the alignment of the guide pins of the mobile half in the guide holes of the fixed manifold, allowing the joining of both parts

Disconnection: press the red button to allow the handler retraction

Connection under pressure: allowed

Material: carbon steel, nylon and aluminum

Surface treatment: carbon steel treated with zinc nickel plating and aluminum components in black anodized

Seals: NBR (Nitrile Rubber), Polyurethane and backup ring in PTFE

Working temperature: -25°C (-13°F) to 100°C (212°F)

Others seals and threads on request

Eigenschaften

Beschreibung: gegenseitige Verbindung von 2 Hydraulikleitungen mit elektrischem Anschluss.

Größen verfügbar: 3/8 Zoll

Hauptdurchflussmittel: hydraulisches Öl

Verbindung: drücken der roten Taste, um die Bewegung des Hebels zu ermöglichen, gefolgt von der Ausrichtung der Führungsbolzen des beweglichen Teils in den Führungslöchern des festen Teils, um die Verbindung beider Teile zu ermöglichen.

Trennung: drücken der roten Taste, um das Zurückziehen des Hebels zu ermöglichen

Verbindung unter Druck: erlaubt

Material: Kohlenstoffstahl, Aluminium und Nylon

Oberflächenbehandlung: Komponenten aus Kohlenstoffstahl sind verzinkt und Komponenten aus Aluminium sind schwarz eloxiert.

Dichtung: NBR (Nitrilkautschuk), Polyurethan und Anti-Extrusionsring aus PTFE

Arbeitstemperatur: -25°C (-13°F) bis 100°C (212°F)
Weitere Dichtungen und Gewinde auf Anfrage

Propriétés

Description: connexion mutuelle de 2 conduites hydrauliques avec connexion électrique.

Tailles disponibles: 3/8 pouces

Fluide principal de passage: huile hydraulique

Connexion: en appuyant sur le bouton rouge pour permettre le mouvement du levier, suivi de l'alignement des broches de guidage de l'ensemble mobile dans les trous de guidage de la partie fixe, permettant la jonction des deux parties.

Déconnexion: en appuyant sur le bouton rouge pour permettre le retrait du levier

Connexion sous pression: autorisée

Matériau: acier au carbone, aluminium et nylon

Traitement de surface: les composants en acier au carbone sont traités en zinc-nickel et les composants en aluminium sont anodisés en noir.

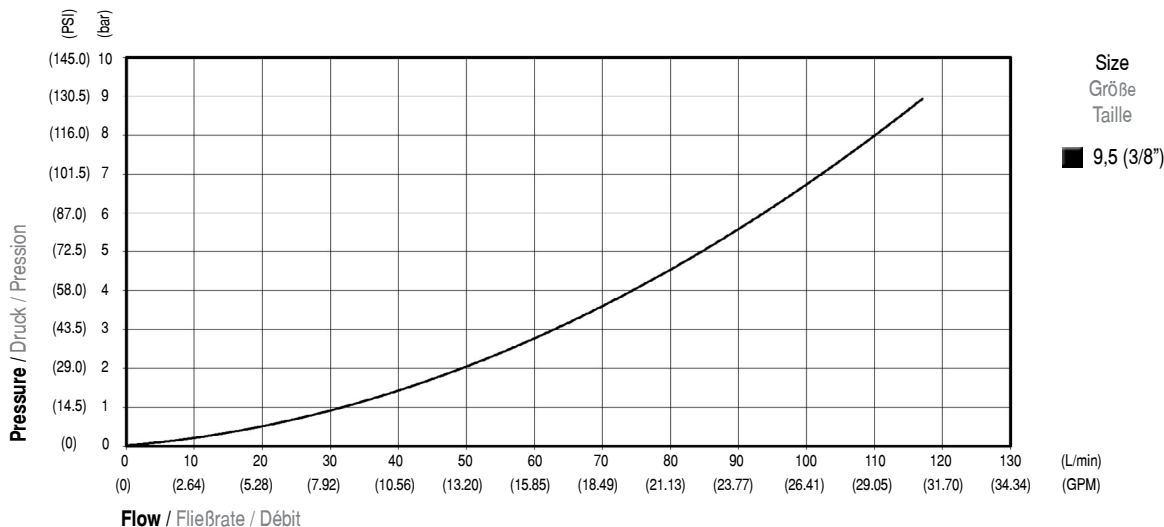
Joint: NBR (caoutchouc nitrile), polyuréthane et bague anti-extrusion en PTFE

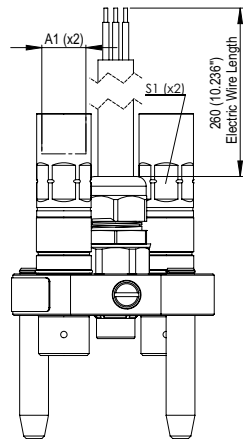
Température de travail: -25°C (-13°F) to 100°C (212°F)
Autres joints et filetages sur demande

Technical Information / Technische Information / Informations Techniques

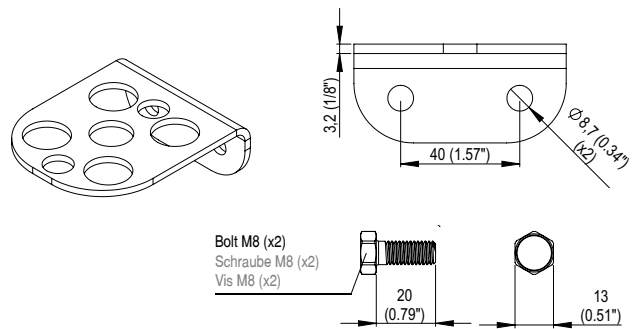
| Size Größe Taille mm (in) | Rated Flow with 2 bar (29 PSI) of pressure drop Nenndurchfluss mit Verlust von 2 bar Druck (29 PSI) Débit nominal avec perte de Pression de 2 bars (29 PSI) L/min (GPM) | Maximum Working Pressure Maximaler Arbeitsdruck Pression de Service Maximale bar (PSI) bar (PSI) | Fluid loss during disconnection (14 PSI) Ölverlust beim trennen (1 bar) Perte d'huile lors de la déconnexion (1 bar) ml (oz) | Number of Pines Anzahl der Stifte Nombre de Broches | Maximum Amparage Maximale Stromstärke Ampérage Maximum (A) | Maximum Voltage Maximale Spannung Tension Maximale (V) |
|------------------------------------|----------------------------------------------------------------------------------------------------------------------------------------------------------------------------------|--------------------------------------------------------------------------------------------------------------|---------------------------------------------------------------------------------------------------------------------------------------|-----------------------------------------------------------|---------------------------------------------------------------------|-----------------------------------------------------------------|
| 2L: 9,5 (3/8") | 50 (13.21) | 350 (5,076) | 0,016 (0.0005) | 9 | 13 | 24 |

Pressure Drop / Ladungsverlust / Perte de Cargaison





Docking for Mobile Half
Stütze für den Beweglichen Teil
Support pour la Partie Mobile



Mobile Half / Bewegliches Teil / Partie Mobile

| Size Größe Taille mm (in) | Part Number Code Code | Nº of Couplers NR der Verbindungen Nombre de Records | A1 Thread Schraube Vis | Thread Standard Gewindestandard Norme de Filetage | Torque Drehmoment Couple Nm | S1 mm (in) | Weight Gewicht Poids g (lb) | Stock Lagerbestand Stock | Tamaño Tamaño Size mm (in) | Código Código Code |
|------------------------------------|-----------------------------|------------------------------------------------------------|------------------------------|---------------------------------------------------------|--------------------------------------|---------------|--------------------------------------|--------------------------------|----------------------------------------------------------------------------------------------------------------------------------------------------------------------------------------------------------------------------------------------------------------------------------------------------------------------------------------------------------------------------------------|--------------------------|
| 2L: 9,5 (3/8") 9 Elet. | 115.280253.Q | 2/2 | 13/16"UN ORFS (ext.) 2x | SAE J1453 | 42 - 52 | 19,1 (3/4") | 917 (2.02) | 🔍 | 2L: 9,5 (3/8") - 9 Elet. | 158.280240.J |
| | 115.280261.Q | 2/2 | M22x1,50 L15 (ext.) | ISO 8434-1-L | 74 - 96 | 19,1 (3/4") | 895 (1.97) | 🔍 | • Para solicitar o modelo móvel com suporte incluso, deve-se adicionar dígito "9" no final do código do produto. Ex.: 115.280075.Q9 • Para pedir un producto con soporte, se debe insertar el dígito "9" al final del código del producto. Ex.: 115.280075.Q9 • To order a product with holder, you should add the number "9" at the end of the product code. Ex.: 115.280075.Q9 | |
| | 115.280273.Q | 2/2 | 3/8" BSP (int.) 2x | DIN 3852-2 | 40 - 56 | 19,1 (3/4") | 805 (1.77) | 🔍 | | |
| | 115.280275.Q | 2/2 | 1/2" BSP (int.) 2x | DIN 3852-2 | 72 - 88 | 19,1 (3/4") | 958 (2.11) | 🔍 | | |
| | 115.280285.Q | 2/2 | 3/4" UNF ORB (int.) 2x | SAE J1926 | 48 - 62 | 19,1 (3/4") | 993 (2.15) | 🔍 | | |

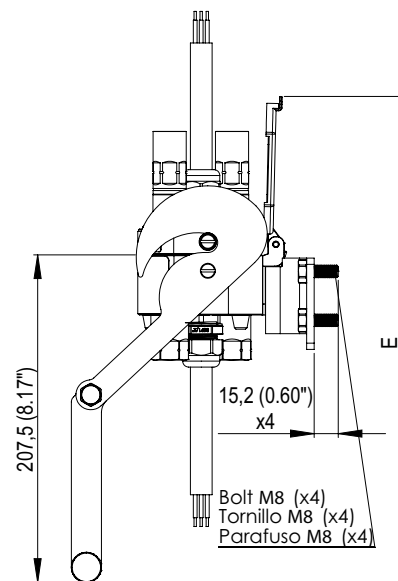
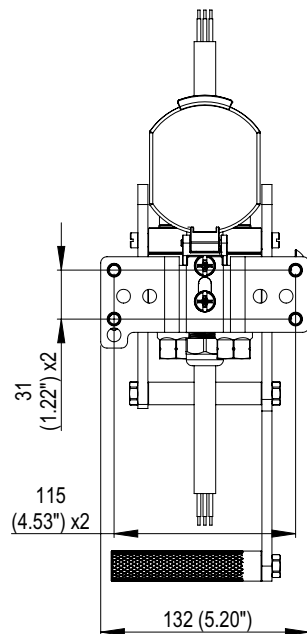
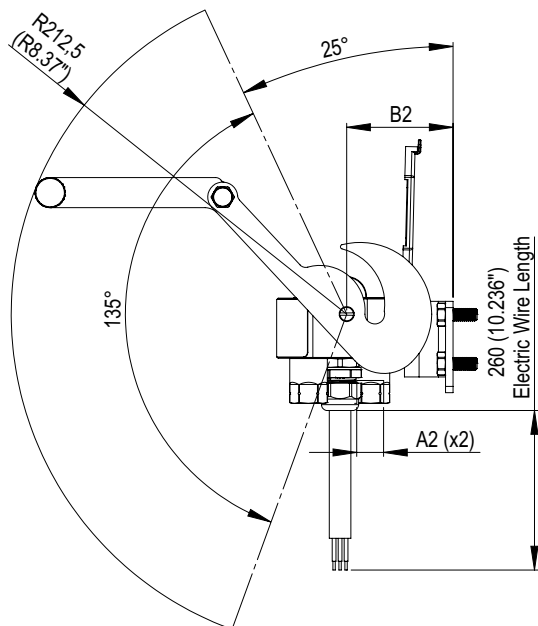
| | |
|--------|-----------------------------------------------------|
| (int.) | Internal Thread / Innengewinde / Filetage Intérieur |
| (ext.) | External Thread / Außengewinde / Filetage |

| | |
|---|-----------------------------------------|
| ✓ | Available / Liniennorm / Norme de Ligne |
| 🔍 | On request / Auf Anfrage / Sur demande |

Parte Móvel Desconectada
Media Móvil Desconectada
Mobile Half Disconnected

Posição de Montagem
Posición de Montaje
Mounting Position

Parte Móvel Conectada
Media Móvil Conectada
Mobile Half Connected



Parte Fixa / Parte Fija / Fixed Half

| Tamanho Tamaño Size mm (in) | Código Código Part Number | Nº de Engates Nº de Acoples Nº of Couplers | A2 Rosca Rosca Thread | Norma da Rosca Norma de la Rosca Thread Standard | Torque Torque Torque Nm | B2 mm (in) | E mm (in) | Peso Peso Weight g (lb) | Estoque Stock Stock |
|--------------------------------------|---------------------------------|--------------------------------------------------|--------------------------------|--------------------------------------------------------|----------------------------------|---------------|----------------|----------------------------------|---------------------------|
| 2L: 9,5 (3/8") 9 Elet. | 117.280252.C | 2/2 | 13/16" UN ORFS (ext.) 2x | SAE J1453 | 42 - 52 | 66,9 (2.63") | 307,0 (12.08") | 2.095 (4.62) | 🔍 |
| | 117.280260.C | 2/2 | M22x1,50 L15 (ext.) | ISO 8434-1-L | 74 - 96 | 66,9 (2.63") | 307,0 (12.08") | 2.070 (4.56) | 🔍 |
| | 117.280272.C | 2/2 | 3/8" BSP (int.) 2x | DIN 3852-2 | 40 - 56 | 66,9 (2.63") | 307,0 (12.08") | 1.980 (4.37) | 🔍 |
| | 117.280274.C | 2/2 | 1/2" BSP (int.) 2x | DIN 3852-2 | 72 - 88 | 66,9 (2.63") | 307,0 (12.08") | 1.998 (4.40) | 🔍 |
| | 117.280284.C | 2/2 | 3/4" UNF ORB (int.) 2x | SAE J1926 | 48 - 62 | 66,9 (2.63") | 307,0 (12.08") | 1.985 (4.38) | 🔍 |

(int.) Internal Thread / Innengewinde / Filetage Intérieur

(ext.) External Thread / Außengewinde / Filetage

✓ Available / Liniennorm / Norme de Ligne

🔍 On request / Auf Anfrage / Sur demande