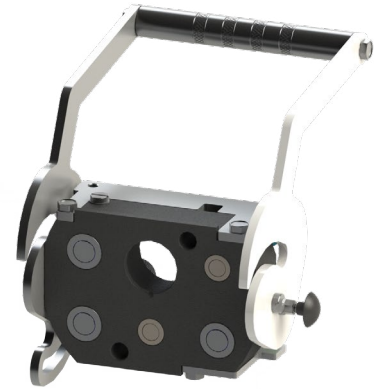


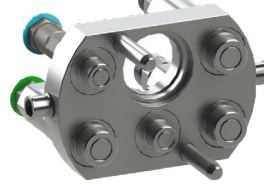
**Mobile Multi-Coupling 5 Lines for Green Series Market (D280800C)**

**Mobiles Mehrfachkupplung 5 Leitungen für den Grün Markt (D280800C)**

**Accouplement Multiple Mobile 5 Lignes pour le Marché de la Série Vert (D280800C)**



**Applications / Anwendung / Applications**



**Features**

**Description:** mutual connection of 5 hydraulic lines with an electric port of up to 31 pins.  
**Available sizes:** 2L: 9,5 (3/8") & 3L: 14,3 (9/16")  
**Main fluid of passage:** hydraulic oil  
**Connection:** pulling the black button of the fixed half to allow the movement of the handle, followed by the alignment of the guide pins of the mobile half in the guide holes of the fixed manifold, allowing the joining of both parts  
**Disconnection:** pull the black button to allow the handler retraction  
**Connection under pressure:** allowed  
**Interchangeability:** interchangeable according to market driven standards (JD)  
**Material:** carbon steel  
**Surface treatment:** zinc plating Cr(III)  
**Seals:** NBR (Nitrile Rubber), Polyurethane and backup ring in PTFE  
**Working temperature:** -25°C (-13°F) to 100°C (212°F)  
 Others seals and threads on request

**Eigenschaften**

**Beschreibung:** gegenseitige Verbindung von 5 Hydraulikleitungen mit elektrischem Portal mit einer Buchse für bis zu 31 Pins.  
**Verfügbare Größen:** 2L: 9,5 (3/8") & 3L: 14,3 (9/16").  
**Hauptdurchflussmittel:** hydrauliköl  
**Verbindung:** ziehen des schwarzen Knopfes auf der festen Seite, um die Bewegung des Hebels zu ermöglichen, gefolgt von der Ausrichtung der Führungsbolzen des beweglichen Teils in den Führungslöchern des festen Teils, um beide Teile zu verbinden  
**Trennung:** ziehen des schwarzen Knopfes, um das Zurückziehen des Hebels zu ermöglichen  
**Verbindung unter Druck:** erlaubt  
**Austauschbarkeit:** austauschbar gemäß den vom Markt vorgegebenen Standards (JD)  
**Material:** Kohlenstoffstahl  
**Oberflächenbehandlung:** dreiwertige Chrom(III)-Zinkbeschichtung  
**Dichtung:** NBR (Nitrilkautschuk), Polyurethan und Anti-Extrusionsring aus PTFE  
**Arbeitstemperatur:** Andere Dichtungen und Gewinde auf Anfrage

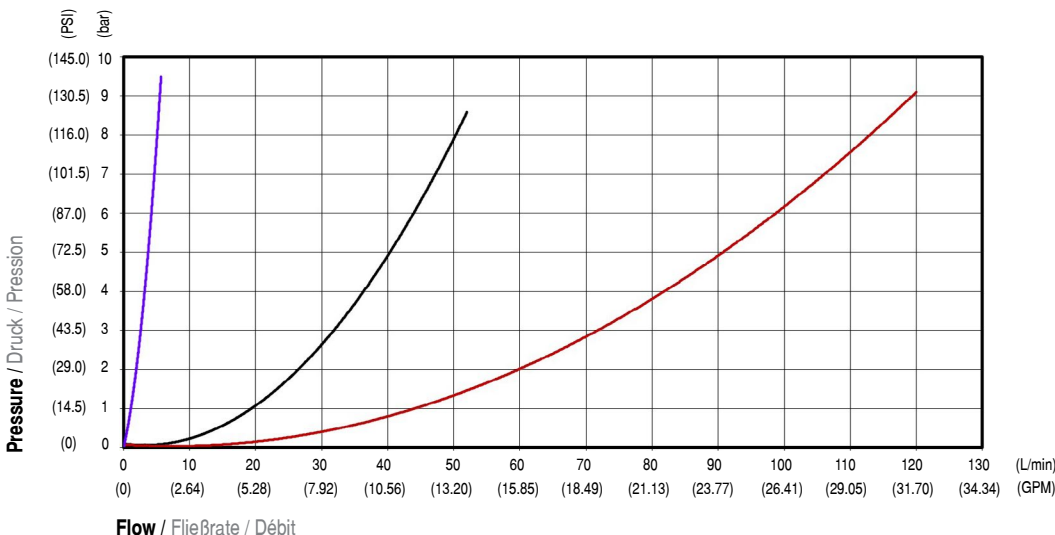
**Propriétés**

**Description:** Connexion mutuelle de 5 lignes hydrauliques avec portique électrique doté d'une prise pour jusqu'à 31 broches.  
**Tailles disponibles:** 2L : 9,5 (3/8") & 3L : 14,3 (9/16").  
**Fluide principal de passage:** huile hydraulique  
**Connexion:** tirer sur le bouton noir de la partie fixe pour permettre le mouvement du levier, suivi de l'alignement des broches de guidage de l'ensemble mobile dans les trous de guidage de la partie fixe, permettant ainsi la jonction des deux parties  
**Déconnexion:** tirer sur le bouton noir pour permettre la rétraction du levier  
**Connexion sous pression:** autorisée  
**Interchangeabilité:** interchangeable selon les normes dictées par le marché (JD)  
**Matériau:** acier au carbone  
**Traitement de surface:** zingage trivalent Cr(III)  
**Étanchéité:** NBR (caoutchouc nitrile), polyuréthane et bague anti-extrusion en PTFE  
**Température de travail:** Autres joints et filetages sur demande

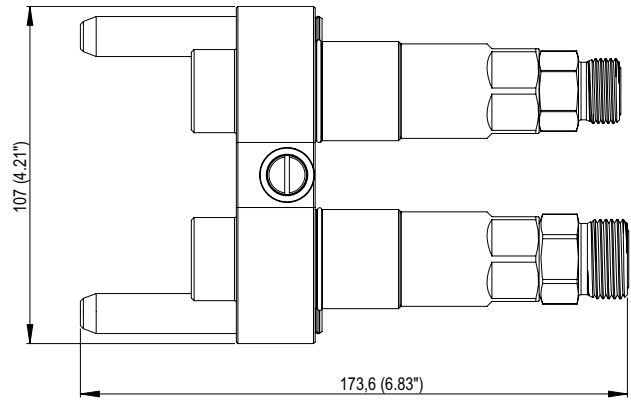
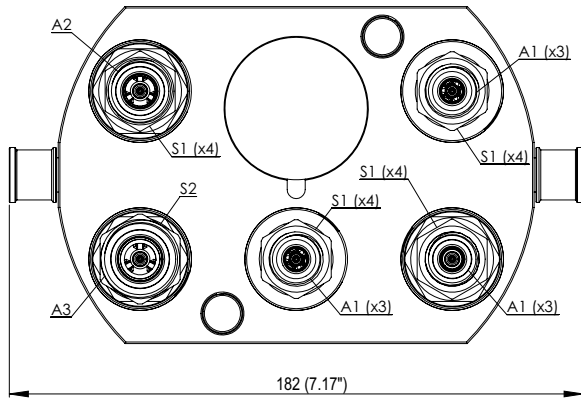
**Technical Information / Technische Information / Informations Techniques**

| Size<br>Größe<br>Taille<br>mm (in) | Rated Flow with 2 bar (29 PSI) of pressure drop<br>Nenndurchfluss mit Verlust von 2 bar Druck (29 PSI)<br>Débit nominal avec perte de Pression de 2 bars (29 PSI)<br>L/min (GPM) | Maximum Working Pressure<br>Maximaler Arbeitsdruck<br>Pression de Service<br>Maximale bar (PSI) | Fluid loss during disconnection (14 PSI)<br>Ölverlust beim trennen (1 bar)<br>Perte d'huile lors de la déconnexion (1 bar)<br>ml (oz) |
|------------------------------------|--|---|---|
| 2L: 9,5 (3/8") & 3L: 14,3 (9/16")  | 9,5 (3/8"): 25 (6.60)   14,3 (9/16"): 60 (15.85)   | 250 (3,626)   | 0,050 (0.0017)  |

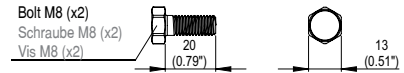
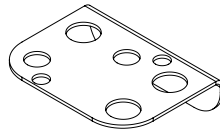
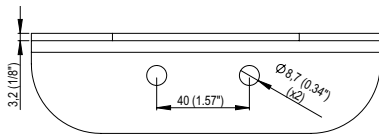
**Pressure Drop / Ladungsverlust / Perte de Cargaion**



# Multi-Coupling / Mehrfachkupplung / Multi-Accouplement



Docking for Mobile Half  
Stütze für den Beweglichen Teil  
Support pour la Partie Mobile



| Size<br>Größe<br>Taille<br>mm (in) | Part Number<br>Code<br>Code |
|------------------------------------|-----------------------------|
| 2L: 9.5 (3/8") & 3L: 14.3 (9/16")  | 158.280832.J                |

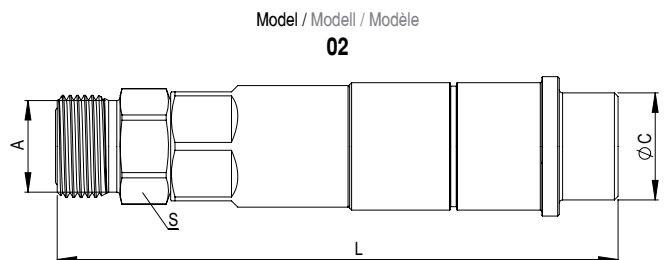
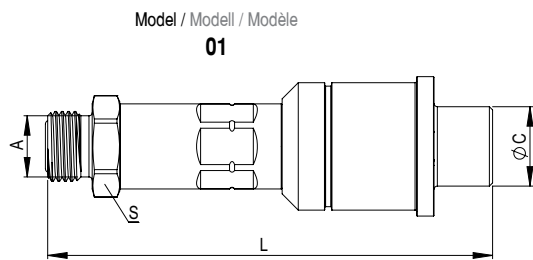
- To order a product with holder, you should add the number "9" at the end of the product code. Ex.: **115.280849.D9**
- Um ein produkt mit enthaltenem support anzufordern, fügen Sie bitte eine "9" am ende des produktcodes hinzu. Ex.: **115.280849.D9**
- Pour demander un produit avec support inclus, veuillez ajouter le chiffre "9" à la fin du code produit. Ex.: **115.280849.D9**

## Mobile Half / Bewegliches Teil / Partie Mobile

| Size<br>Größe<br>Taille<br>mm (in) | Part Number<br>Code<br>Code | N° of Couplers<br>Anzahl der<br>Kupplungen<br>Nombre de<br>Records | A1<br>Thread<br>Schraube<br>Vis | A2<br>Thread<br>Schraube<br>Vis | A3<br>Thread<br>Schraube<br>Vis | Thread Standard<br>Gewindestandard<br>Norme de<br>Filetage | S1<br>mm (in) | S2<br>mm (in) | Weight<br>Gewicht<br>Poids<br>g (lb) | Stock<br>Lagerbestand<br>Stock |
|------------------------------------|-----------------------------|--|---------------------------------|---------------------------------|---------------------------------|--|---------------|---------------|--------------------------------------|--------------------------------|
|                                    | 115.280829.D                | 25   | —                               | 13/16"UN ORFS (ext.)  1x        | 1"UN ORFS (ext.)  1x            | SAE J1453  | —             | 25.4 (1")     | 3.438 (7.58")                        | ✓                              |
| 2L: 9.5 (3/8")                     | 115.280833.D                | 25   | 11/16"UN ORFS (ext.)  2x        | —                               | —                               | SAE J1453  | 22.2 (7/8")   | —             | 2.658 (5.86")                        | 🔍                              |
| 3L: 14.3 (9/16")                   | 115.280837.D                | 45   | 11/16"UN ORFS (ext.)  3x        | 13/16"UN ORFS (ext.)  1x        | —                               | SAE J1453  | 22.2 (7/8")   | 25.4 (1")     | 3.662 (8.07")                        | 🔍                              |
|                                    | 115.280839.D                | 55   | 11/16"UN ORFS (ext.)  3x        | 13/16"UN ORFS (ext.)  1x        | 1"UN ORFS (ext.)  1x            | SAE J1453  | 22.2 (7/8")   | 25.4 (1")     | 4.179 (9.21")                        | ✓                              |
|                                    | 115.280841.D                | 55   | 11/16"UN ORFS (ext.)  3x        | 11/16"UN ORFS (ext.)  1x        | 11/16"UN ORFS (ext.)  1x        | SAE J1453  | 22.2 (7/8")   | 25.4 (1")     | 4.161 (9.17")                        | 🔍                              |

|  |
|--|
| (int.) Internal Thread / Innengewinde / Filetage Intérieur |
| (ext.) External Thread / Außengewinde / Filetage           |

|   |
|---|
| ✓ Available / Liniennorm / Norme de Ligne |
| 🔍 On request / Auf Anfrage / Sur demande  |

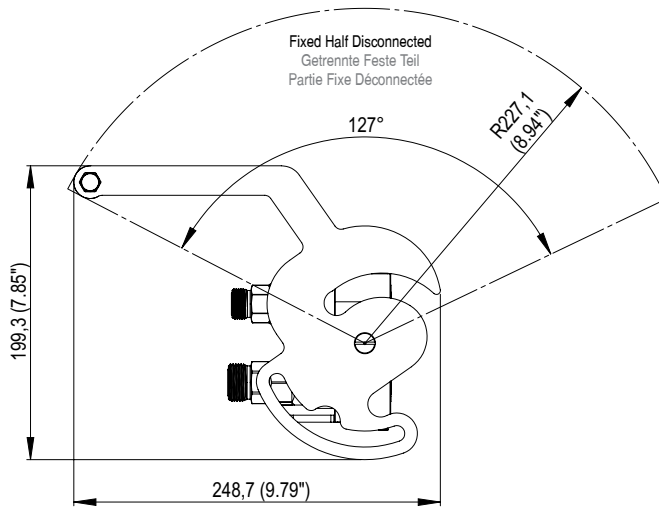


## Replacement Cartridge Coupler / Ersatzkartuschenkupplung / Accouplement de Rechange pour Cartouche

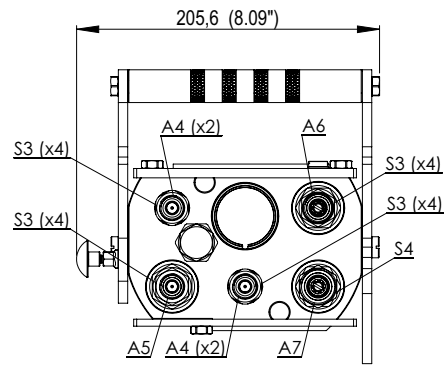
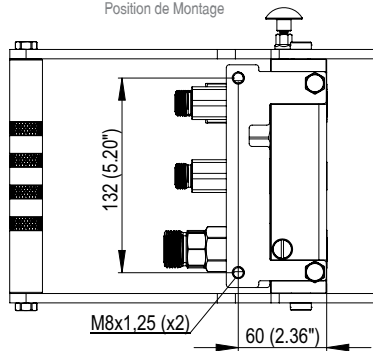
| Size<br>Größe<br>Taille<br>mm (in) | Part Number<br>Code<br>Code | A<br>Thread<br>Schraube<br>Vis | Thread Standard<br>Gewindestandard<br>Norme de Filetage | Torque<br>Drehmoment<br>Couple<br>Nm | L<br>mm (in)  | S<br>mm (in)   | Ø C<br>mm (in) | Weight<br>Gewicht<br>Poids<br>g (lb) | Model<br>Modell<br>Modèle | Stock<br>Lagerbestand<br>Stock |
|------------------------------------|-----------------------------|--------------------------------|---|--------------------------------------|---------------|----------------|----------------|--------------------------------------|---------------------------|--------------------------------|
| 9.5 (3/8")                         | 115.183762WC1               | 11/16"UN ORFS (ext.)           | SAE J1453   | 32 - 38                              | 108,8 (4.28") | 22,2 (7/8")    | 19,6 (0.77")   | 309 (0.68)                           | 01                        | ✓                              |
| 14.3 (9/16")                       | 115.185771.X1               | 3/4"UNF ORB (int.)             | SAE J1926   | 48 - 62                              | 110,4 (4.35") | 27,0 (1.1/16") | 26,5 (1.04")   | 389 (0.86)                           | 02                        | ✓                              |
|                                    | 115.185772.X1               | 7/8"UNF ORB (int.)             | SAE J1926   | 58 - 74                              | 112,5 (4.43") | 28,6 (1.1/8")  | 26,5 (1.04")   | 410 (0.90)                           | 02                        | ✓                              |
|                                    | 115.185747XD1               | 11/16"UN ORFS (ext.)           | SAE J1453   | 32 - 38                              | 130,9 (5.15") | 22,2 (7/8")    | 26,5 (1.04")   | 448 (0.99)                           | 02                        | ✓                              |
|                                    | 115.185748XD1               | 13/16"UN ORFS (ext.)           | SAE J1453   | 42 - 52                              | 130,9 (5.15") | 22,2 (7/8")    | 26,5 (1.04")   | 449 (0.99)                           | 02                        | ✓                              |
|                                    | 115.185749XD1               | 1"UN ORFS (ext.)               | SAE J1453   | 58 - 70                              | 133,9 (5.27") | 25,4 (1")      | 26,5 (1.04")   | 482 (1.06)                           | 02                        | ✓                              |

|  |
|--|
| (int.) Internal Thread / Innengewinde / Filetage Intérieur |
| (ext.) External Thread / Außengewinde / Filetage           |

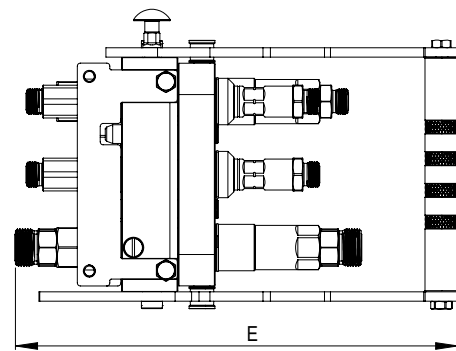
|   |
|---|
| ✓ Available / Liniennorm / Norme de Ligne |
| 🔍 On request / Auf Anfrage / Sur demande  |



Mounting Position  
Montageposition  
Position de Montage



Mobile Half Connected  
Verbundener Beweglicher Teil  
Partie Mobile Connectée



## Fixed Half / Fester Teil / Partie Fixe

| Size<br>Größe<br>Taille<br>mm (in) | Part Number<br>Code<br>Code | N° of Couplers<br>Anzahl der<br>Kupplungen<br>Nombre de<br>Reccords | A4<br>Thread<br>Schraube<br>Vis | A5<br>Thread<br>Schraube<br>Vis | A6<br>Thread<br>Schraube<br>Vis | A7<br>Thread<br>Schraube<br>Vis | Thread Standard<br>Gewindestandard<br>Norme de Filetage | S3<br>mm (in) | S4<br>mm (in) |
|------------------------------------|-----------------------------|---|---------------------------------|---------------------------------|---------------------------------|---------------------------------|---|---------------|---------------|
| 2L: 9,5 (3/8")                     | 117280804.C                 | 55  | 9/16"UN ORFS (ext.) 2x          | 11/16"UN ORFS (ext.) 1x         | 13/16"UN ORFS (ext.) 1x         | 1"UN ORFS (ext.) 1x             | SAE J1453   | 22,2 (7/8")   | 25,4 (1")     |
| 3L: 14,3 (9/16")                   | 117280838.C                 | 55  | 11/16"UN ORFS (ext.) 2x         | 11/16"UN ORFS (ext.) 1x         | 13/16"UN ORFS (ext.) 1x         | 1"UN ORFS (ext.) 1x             | SAE J1453   | 22,2 (7/8")   | 25,4 (1")     |

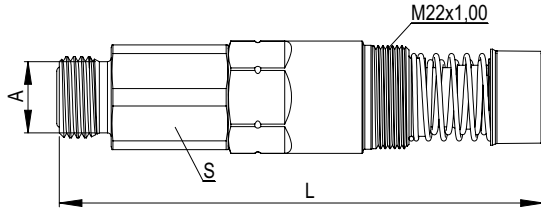
| Part Number<br>Code<br>Code | E<br>mm (in)   | Weight<br>Gewicht<br>Poids<br>g (lb) | Stock<br>Lagerbestand<br>Stock |
|-----------------------------|----------------|--------------------------------------|--------------------------------|
| 117280804.C                 | 336,5 (13.25") | 4.788 (10.56)                        | ✓                              |
| 117280838.C                 | 297,0 (11.69") | 4.499 (9.92)                         | ✓                              |

|        |   |
|--------|---|
| (int.) | Internal Thread / Innengewinde / Filetage Intérieur |
| (ext.) | External Thread / Außengewinde / Filetage           |

|   |   |
|---|---|
| ✓ | Available / Liniennorm / Norme de Ligne |
| 🔍 | On request / Auf Anfrage / Sur Demande  |

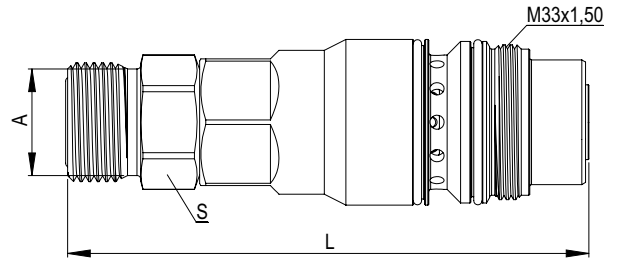
Model / Model / Modèle

01



Model / Model / Modèle

02



## Replacement Cartridge Coupler / Ersatzkartuschenkupplung / Accouplement de Rechange pour Cartouche

| Size<br>Größe<br>Taille<br>mm (in) | Part Number<br>Code<br>Code | A<br>Thread<br>Schraube<br>Vis | Thread Standard<br>Gewindestandard<br>Norme de Filetage | Torque<br>Drehmoment<br>Couple<br>Nm | L<br>mm (in)  | S<br>mm (in) | Weight<br>Gewicht<br>Poids<br>g (lb) | Model<br>Modell<br>Modèle | Stock<br>Lagerbestand<br>Stock |
|------------------------------------|-----------------------------|--------------------------------|---|--------------------------------------|---------------|--------------|--------------------------------------|---------------------------|--------------------------------|
| 9,5 (3/8")                         | 117.183702.GC               | 9/16"UN ORFS (ext.) "Restr"    | SAE J1453   | 26 - 34                              | 98,6 (3.88")  | 22,2 (7/8")  | 194 (0.43)                           | 01                        | ✓                              |
|                                    | 117.183703.GC*              | 11/16"UN ORFS (ext.) "Restr"   | SAE J1453   | 32 - 38                              | 102,7 (4.04") | 22,2 (7/8")  | 209 (0.46)                           | 01                        | ✓                              |
| 14,3 (9/16")                       | 117.280802.XD*              | 11/16"UN ORFS (ext.) "Restr"   | SAE J1453   | 32 - 38                              | 98,6 (3.88")  | 22,2 (7/8")  | 371 (0.82)                           | 02                        | ✓                              |
|                                    | 117.280847.XD               | 11/16"UN ORFS (ext.)           | SAE J1453   | 32 - 38                              | 103,6 (4.08") | 22,2 (7/8")  | 385 (0.85)                           | 02                        | ✓                              |
|                                    | 117.280848.WD               | 13/16"UN ORFS (ext.)           | SAE J1453   | 42 - 52                              | 108,1 (4.25") | 22,2 (7/8")  | 411 (0.91)                           | 02                        | ✓                              |
|                                    | 117.280898.WD**             | 13/16"UN ORFS (ext.) "Long"    | SAE J1453   | 42 - 52                              | 143,6 (5.65") | 22,2 (7/8")  | 494 (1.09)                           | 02                        | ✓                              |
|                                    | 117.280849.WD               | 1"UNS ORFS (ext.)              | SAE J1453   | 58 - 70                              | 110,6 (4.35") | 25,4 (1")    | 416 (0.92)                           | 02                        | ✓                              |
|                                    | 117.280899.WD**             | 1"UNS ORFS (ext.) "Long"       | SAE J1453   | 58 - 70                              | 147,1 (5.79") | 25,4 (1")    | 543 (1.20)                           | 02                        | ✓                              |

\* "Restr": with the fitting with the restricted flow.

\*\* "Restr": mit einem adapter für begrenzten durchfluss.

\* "Restr": avec un adaptateur de débit restreint.

\*\* "Long": longer adapter to suit specific application.

\*\* "Long": längerer adapter, um die spezifische anwendung zu erfüllen.

\*\* "Long": adaptateur plus long pour répondre à l'application spécifique.

|        |   |
|--------|---|
| (int.) | Internal Thread / Innengewinde / Filetage Intérieur |
| (ext.) | External Thread / Außengewinde / Filetage           |

|   |   |
|---|---|
| ✓ | Available / Liniennorm / Norme de Ligne |
| 🔍 | On request / Auf Anfrage / Sur demande  |