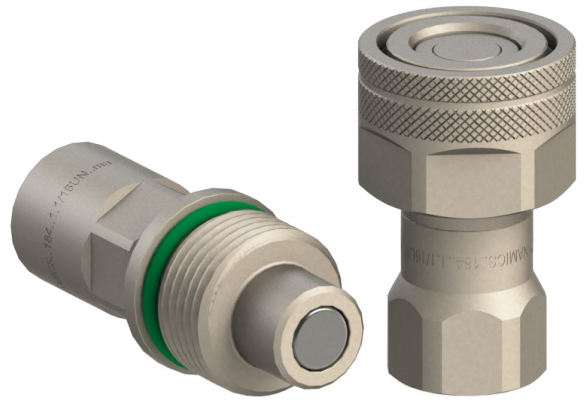


# Face Plana Roscado (Série F180700E)

Cara Plana Roscado (Serie F180700E)

Flat Face Screw On (F180700E Séries)



## Aplicações / Aplicaciones / Applications



## Propriedades

**Principal fluido de passagem:** óleo hidráulico  
**Conexão:** através da rosca (manualmente)  
**Desconexão:** através da rosca  
**Conexão sob pressão:** permitida  
**Desconexão sob pressão:** permitida (dependendo do tamanho do engate ou da pressão residual, uma chave pode ser necessária)  
**Intercambiabilidade:** padrão europeu  
**Material:** aço carbono de alta qualidade  
**Tratamento superficial:** banho de zinco níquel  
**Vedação:** NBR (Borracha Nitrílica), Poliuretano e anel anti-extrusão em PTFE  
**Temperatura de trabalho:** -25°C (-13°F) até 100°C (212°F)  
 Outras vedações, molas e roscas sob consulta

## Propiedades

**Principal fluido de pasaje:** aceite hidráulico  
**Conexión:** por medio de la rosca (a mano)  
**Desconexión:** por medio de la rosca  
**Conexión bajo presión:** permitido  
**Desconexión bajo presión:** permitido (Según el tamaño del acoplador o la presión residual, es posible que se necesite una llave inglesa)  
**Intercambiabilidad:** estándar europeo  
**Material:** acero carbono de alta calidad  
**Tratamiento superficial:** baño de zinc níquel  
**Sello:** NBR (Goma de Nitrilo), Poliuretano y anillo anti-extrusión de PTFE  
**Temperatura de trabajo:** -25°C (-13°F) hasta 100°C (212°F)  
 Otros sellos, resortes y roscas bajo consulta

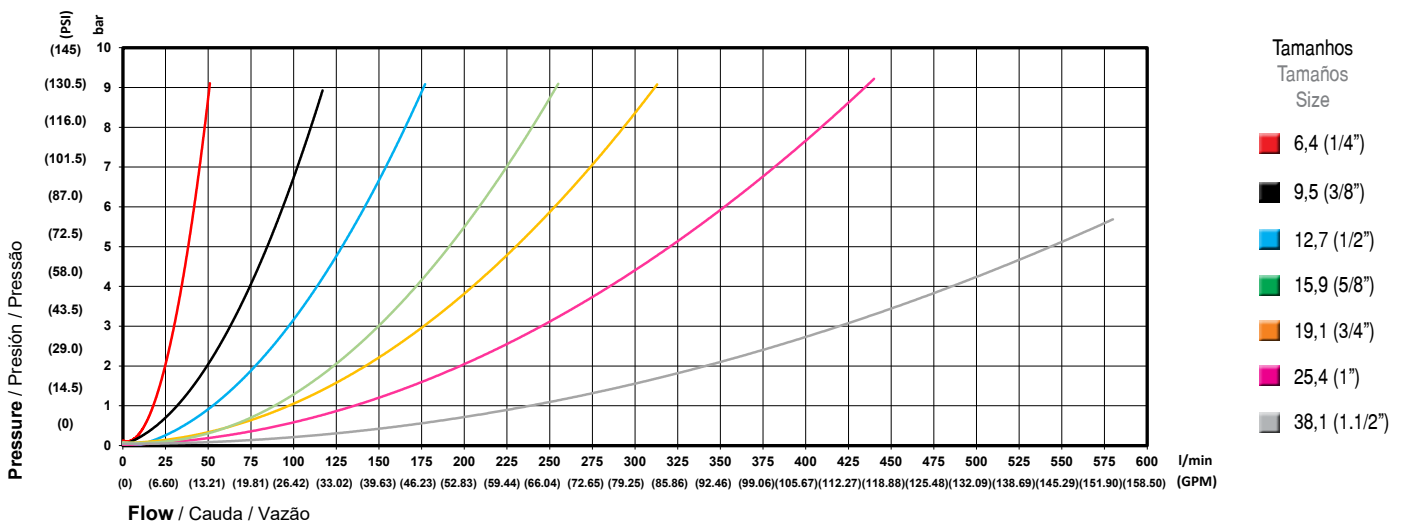
## Features

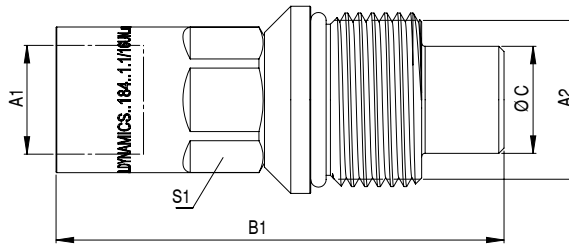
**Main fluid of passage:** hydraulic oil  
**Connection:** screw to connect (manually)  
**Disconnection:** unscrew to disconnect  
**Connection under pressure:** allowed  
**Disconnection under pressure:** allowed (depending on size coupler or residual pressure, a wrench may be needed)  
**Interchangeability:** european standard  
**Material:** high-grade carbon steel  
**Surface treatment:** zinc nickel plating  
**Seals:** NBR (Nitrile Rubber), Polyurethane and backup ring in PTFE  
**Working temperature:** -25°C (-13°F) to 100°C (212°F)  
 Others seals, springs and threads on request

## Informações Técnicas / Informaciones Técnicas / Technical Information

Tamanho Tamaño Size mm (in)	Vazão Nominal com perda de pressão de 2 bar (29 PSI) Caudal Nominal con pérdida de presión de 2 bar (29 PSI) Rated Flow with 2 bar (29 PSI) of pressure drop L/min (GPM)	Pressão Máxima de Trabalho Presión Máx. de Trabajo Maximum Working Pressure bar (PSI)	Pressão de Ruptura Presión de Rotura Burst Pressure			Perda de óleo ao desconectar (1 bar) Pérdida de aceite al desconectar (1 bar) Fluid loss during disconnection (14 PSI) ml (cc)
			Fêmea Hembra Female bar (PSI)	Macho Macho Male bar (PSI)	Conectado Conectado Connected bar (PSI)	
6,4 (1/4")	24 (6.34)	400 (5,802)	1.270 (18,420)	1.200 (17,404)	1.270 (18,420)	0,007 (0.0002)
9,5 (3/8")	50 (13.21)	350 (5,076)	1.250 (18,130)	1.330 (19,290)	1.370 (19,970)	0,008 (0.0003)
12,7 (1/2")	79 (20.87)	350 (5,076)	1.230 (17,840)	1.280 (18,565)	1.400 (20,305)	0,010 (0.0003)
15,9 (5/8")	125 (33.02)	350 (5,076)	1.030 (14,938)	1.330 (19,290)	1.330 (19,290)	0,014 (0.0005)
19,1 (3/4")	140 (36.98)	350 (5,076)	1.280 (18,565)	1.330 (19,290)	1.200 (17,404)	0,020 (0.0007)
25,4 (1")	200 (52.83)	350 (5,076)	1.020 (14,648)	1.020 (14,648)	1.020 (14,648)	0,030 (0.0010)
38,1 (1.1/2")	340 (89.82)	300 (4,351)	1.080 (15,664)	1.020 (14,648)	1.100 (15,954)	0,060 (0.0020)

## Perda de Carga / Pérdida de Pressão / Pressure Drop





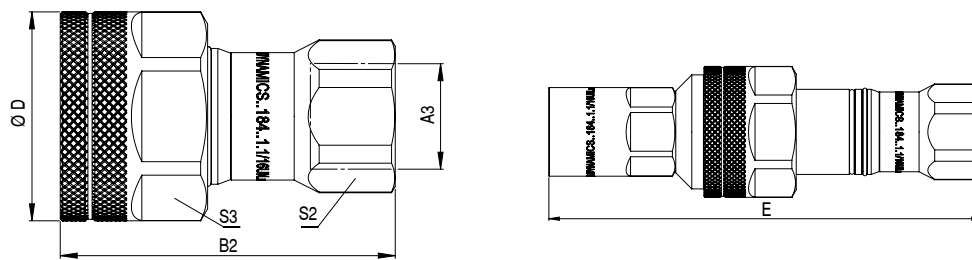
Macho / Macho / Male

Tamanho Tamaño Size mm (in)	Código Código Part Number	A1 Rosca Rosca Thread	Norma da Rosca Norma de la Rosca Thread Standard	Torque Torque Torque Nm	A2 Rosca Rosca Thread	B1 mm (in)	S1 mm (in)	C Ø mm (in)	Peso Peso Weight g(lb)	Estoque Stock Stock
6,4 (1/4")	115.182762.F*	9/16" UNF ORB (int.)	SAE J1926	26 - 34	M30x2.00	84,7 (3.33")	15,9 (5/8")	16,0 (0.63")	251 (0.55)	🔍
	115.183758.F*	3/8" NPTF (int.)	ANSI B1.20.3	30 - 40	M33x2.00	92,7 (3.65")	19,1 (3/4")	19,8 (0.78")	313 (0.69)	✓
9,5 (3/8")	115.183759.F*	1/2" NPTF (int.)	ANSI B1.20.3	52 - 66	M33x2.00	94,8 (3.73")	25,4 (1")	19,8 (0.78")	369 (0.81)	✓
	115.183761.F*	3/8" BSP (int.)	DIN 3852-2	40 - 56	M33x2.00	93,4 (3.68")	19,1 (3/4")	19,8 (0.78")	312 (0.69)	✓
	115.183762.F*	1/2" BSP (int.)	DIN 3852-2	72 - 88	M33x2.00	95,0 (3.74")	25,4 (1")	19,8 (0.78")	366 (0.81)	🔍
	115.183763.F*	3/4" UNF ORB (int.)	SAE J1926	48 - 62	M33x2.00	95,0 (3.74")	23,8 (15/16")	19,8 (0.78")	350 (0.77)	✓
	115.184778.F*	1/2" NPTF (int.)	ANSI B1.20.3	52 - 66	M40x3.00	96,6 (3.80")	22,2 (7/8")	24,6 (0.97")	466 (1.03)	✓
	115.184779.F*	3/4" NPTF (int.)	ANSI B1.20.3	68 - 88	M40x3.00	100,6 (3.96")	30,0 (1.3/16")	24,6 (0.97")	553 (1.22)	✓
12,7 (1/2")	115.184781.F*	1/2" BSP (int.)	DIN 3852-2	72 - 88	M40x3.00	97,5 (3.84")	22,2 (7/8")	24,6 (0.97")	455 (1.00)	🔍
	115.184782.F*	3/4" BSP (int.)	DIN 3852-2	120 - 150	M40x3.00	100,6 (3.96")	30,0 (1.3/16")	24,6 (0.97")	555 (1.22)	🔍
	115.184783.F*	3/4" UNF ORB (int.)	SAE J1926	48 - 62	M40x3.00	97,0 (3.82")	22,2 (7/8")	24,6 (0.97")	467 (1.03)	✓
	115.184784.F*	7/8" UNF ORB (int.)	SAE J1926	58 - 74	M40x3.00	99,1 (3.90")	23,8 (15/16")	24,6 (0.97")	469 (1.03)	🔍
	115.184785.F*	1.1/16" UN ORB (int.)	SAE J1926	90 - 116	M40x3.00	102,6 (4.04")	30,0 (1.3/16")	24,6 (0.97")	547 (1.21)	✓
	115.185758.F*	3/4" NPT (int.)	ANSI B1.20.1	68 - 88	M45x3.00	124,5 (4.90")	30,0 (1.3/16")	27,0 (1.06")	797 (1.76)	✓
15,9 (5/8")	115.185761.F*	3/4" BSP (int.)	DIN 3852-2	120 - 150	M45x3.00	124,5 (4.90")	30,0 (1.3/16")	27,0 (1.06")	796 (1.75)	🔍
	115.185764.F*	1.1/16" UN ORB (int.)	SAE J1926	90 - 116	M45x3.00	126,7 (4.99")	31,8 (1.1/2")	27,0 (1.06")	844 (1.86)	✓
19,1 (3/4")	115.186758.F*	3/4" NPT (int.)	ANSI B1.20.3	68 - 88	M50x3.00	128,3 (5.05")	30,0 (1.3/16")	30,0 (1.18")	988 (2.18)	🔍
	115.186759.F*	1" NPTF (int.)	ANSI B1.20.1	82 - 108	M50x3.00	130,5 (5.14")	36,5 (1.7/16")	30,0 (1.18")	1.130 (2.49)	✓
	115.186761.F*	3/4" BSP (int.)	DIN 3852-2	120 - 150	M50x3.00	128,3 (5.05")	30,0 (1.3/16")	30,0 (1.18")	986 (2.17)	🔍
	115.186762.F*	1" BSP (int.)	DIN 3852-2	200 - 240	M50x3.00	130,8 (5.15")	36,5 (1.7/16")	30,0 (1.18")	1.120 (2.47)	🔍
	115.186764.F*	1.1/16" UN ORB (int.)	SAE J1926	90 - 116	M50x3.00	130,5 (5.14")	31,8 (1.1/2")	30,0 (1.18")	1.035 (2.28)	🔍
	115.186765.F*	1.5/16" UN ORB (int.)	SAE J1926	128 - 160	M50x3.00	132,3 (5.21")	38,1 (1.1/2")	30,0 (1.18")	1.151 (2.54)	✓
25,40 (1")	115.186766.F*	FLANGE HEAD SIZE 25 (1")	ISO 6162-2	-----	M50x3.00	109,3 (4.30")	33,4 (1.5/16")	30,0 (1.18")	1.141 (2.52)	🔍
	115.187764.F*	1" NPTF (int.)	ANSI B1.20.1	82 - 108	M58x3.00	151,9 (5.98")	36,5 (1.7/16")	36,0 (1.42")	1.714 (3.78)	🔍
	115.187765.F*	1" BSP (int.)	DIN 3852-2	200 - 240	M58x3.00	152,3 (6.00")	36,5 (1.7/16")	36,0 (1.42")	1.703 (3.75)	🔍
	115.187766.F*	1.1/4" NPTF (int.)	ANSI B1.20.1	94 - 126	M58x3.00	153,6 (6.05")	46,1 (1.13/16")	36,0 (1.42")	1.947 (4.29)	✓
	115.187767.F*	1.1/4" BSP (int.)	DIN 3852-2	320 - 380	M58x3.00	153,6 (6.05")	46,1 (1.13/16")	36,0 (1.42")	1.941 (4.28)	🔍
	115.187768.F*	1.5/16" UN ORB (int.)	SAE J1926	128 - 160	M58x3.00	153,3 (6.04")	36,5 (1.7/16")	36,0 (1.42")	1.698 (3.74)	✓
	115.187769.F*	1.5/8" UN ORB (int.)	SAE J1926	180 - 210	M58x3.00	151,1 (5.95")	46,1 (1.13/16")	36,0 (1.42")	1.909 (4.21)	🔍
	115.187772.F*	FLANGE HEAD SIZE 32 (1.1/4")	ISO 6162-2	-----	M58x3.00	131,3 (5.17")	38,1 (1.1/2")	36,0 (1.42")	1.725 (3.80)	🔍
	115.189766.F*	1.1/4" NPTF (int.)	ANSI B1.20.1	94 - 126	M80x4.00	169,6 (6.68")	46,0 (1.13/16")	57,0 (2.24")	3.404 (7.50)	🔍
	115.189767.F*	1.1/4" BSP (int.)	DIN 3852-2	320 - 380	M80x4.00	169,6 (6.68")	46,0 (1.13/16")	57,0 (2.24")	3.388 (7.47)	🔍
38,10 (1.1/2")	115.189768.F*	1.1/2" NPTF (int.)	ANSI B1.20.1	114 - 146	M80x4.00	171,1 (6.74")	50,8 (2")	57,0 (2.24")	3.716 (8.19)	🔍
	115.189769.F*	1.1/2" BSP (int.)	DIN 3852-2	320 - 380	M80x4.00	171,1 (6.74")	50,8 (2")	57,0 (2.24")	3.697 (8.15)	🔍
	115.189771.F*	1.5/8" UN ORB (int.)	SAE J1926	180 - 210	M80x4.00	167,1 (6.58")	46,0 (1.13/16")	57,0 (2.24")	3.432 (7.57)	🔍
	115.189772.F*	1.7/8" UN ORB (int.)	SAE J1926	209 - 231	M80x4.00	171,9 (6.77")	50,8 (2")	57,0 (2.24")	4.031 (8.89)	🔍
	115.189773.F*	FLANGE HEAD SIZE 32 (1.1/4")	ISO 6162-2	-----	M80x4.00	145,4 (5.72")	54,0 (2.1/8")	57,0 (2.24")	3.169 (6.99)	🔍
	115.189774.F*	FLANGE HEAD SIZE 38 (1.1/2")	ISO 6162-2	-----	M80x4.00	145,4 (5.72")	54,0 (2.1/8")	57,0 (2.24")	3.315 (7.31)	🔍

\*Adicione a letra "Y" no final do código para solicitar que o engate venha com uma capa protetora de alumínio.  
 \*Agregue la letra "Y" al final del código para solicitar que el acoplador venga con una tapa protectora de aluminio.  
 \*Add the letter "Y" at the end of the part number to request the coupler comes with an aluminum protective cap.

(int.) Rosca Interna / Rosca Interna / Internal Thread  
 (ext.) Rosca Externa / Rosca Externa / External Thread

✓ Normal de Linha / Disponible / Available  
 🔍 Sob Consulta / Bajo Pedido / On request



Fêmea / Hembra / Female

Tamanho Tamaño Size mm (in)	Código Código Part Number	A3 Rosca Rosca Thread	Norma da Rosca Norma de la Rosca Thread Standard	Torque Torque Torque Nm	B2 mm (in)	S2 mm (in)	S3 mm (in)	D Ø mm (in)	E mm (in)	Peso Peso Wight g(lb)	Estoque Stock Stock
6,4 (1/4")	117.182731.E*	9/16" UNF ORB (int.)	SAE J1926	26 - 34	49,9 (1.97")	17,5 (11/16")	33,4 (1.5/16")	36,5 (1.44")	L1 + L2 -11,8 (0.46")	215 (0.47)	🔍
9,5 (3/8")	117.183732.E*	3/8" NPTF (int.)	ANSI B1.20.3	30 - 40	67,9 (2.67")	23,8 (15/16")	36,5 (1.7/16")	40,0 (1.57")	L1 + L2 -16,5 (0.65")	353 (0.78)	✓
	117.183733.E*	1/2" NPTF (int.)	ANSI B1.20.3	52 - 66	69,1 (2.72")	25,4 (1")	36,5 (1.7/16")	40,0 (1.57")	L1 + L2 -16,5 (0.65")	350 (0.77)	✓
	117.183734.E*	3/8" BSP (int.)	DIN 3852-2	40 - 56	68,2 (2.69")	21,0 (27/32")	36,5 (1.7/16")	40,0 (1.57")	L1 + L2 -16,5 (0.65")	339 (0.75)	✓
	117.183735.E*	1/2" BSP (int.)	DIN 3852-2	72 - 88	68,6 (2.70")	25,4 (1")	36,5 (1.7/16")	40,0 (1.57")	L1 + L2 -16,5 (0.65")	346 (0.76)	🔍
	117.183736.E*	3/4" UNF ORB (int.)	SAE J1926	48 - 62	69,1 (2.72")	23,8 (15/16")	36,5 (1.7/16")	40,0 (1.57")	L1 + L2 -16,5 (0.65")	341 (0.75)	✓
	117.184731.E*	1/2" NPTF (int.)	ANSI B1.20.3	52 - 66	76,4 (3.01")	28,6 (1.1/8")	44,5 (1.3/4")	49,2 (1.94")	L1 + L2 -18,5 (0.73")	584 (1.29)	✓
12,7 (1/2")	117.184732.E*	1/2" BSP (int.)	DIN 3852-2	72 - 88	76,4 (3.01")	28,6 (1.1/8")	44,5 (1.3/4")	49,2 (1.94")	L1 + L2 -18,5 (0.73")	580 (1.28)	🔍
	117.184733.E*	3/4" NPTF (int.)	ANSI B1.20.3	68 - 88	78,3 (3.08")	33,4 (1.5/16")	44,5 (1.3/4")	49,2 (1.94")	L1 + L2 -18,5 (0.73")	603 (1.33)	✓
	117.184734.E*	3/4" BSP (int.)	DIN 3852-2	120 - 150	77,1 (3.04")	33,4 (1.5/16")	44,5 (1.3/4")	49,2 (1.94")	L1 + L2 -18,5 (0.73")	592 (1.31)	🔍
	117.184735.E*	3/4" UNF ORB (int.)	SAE J1926	48 - 62	75,9 (2.99")	25,4 (1")	44,5 (1.3/4")	49,2 (1.94")	L1 + L2 -18,5 (0.73")	567 (1.25)	✓
	117.184736.E*	7/8" UNF ORB (int.)	SAE J1926	58 - 74	77,4 (3.05")	26,0 (1.1/32")	44,5 (1.3/4")	49,2 (1.94")	L1 + L2 -18,5 (0.73")	588 (1.30)	🔍
	117.184737.E*	1.1/16" UN ORB (int.)	SAE J1926	90 - 116	78,9 (3.11")	33,4 (1.5/16")	44,5 (1.3/4")	49,2 (1.94")	L1 + L2 -18,5 (0.73")	595 (1.31)	✓
15,9 (5/8")	117.185737.E*	3/4" NPTF (int.)	ANSI B1.20.3	68 - 88	83,6 (3.29")	30,0 (1.3/16")	49,21 (1.15/16")	54,0 (2.15")	L1 + L2 -18,5 (0.73")	768 (1.69)	✓
	117.185738.E*	3/4" BSP (int.)	DIN 3852-2	120 - 150	82,8 (3.26")	30,0 (1.3/16")	49,21 (1.15/16")	54,0 (2.15")	L1 + L2 -18,5 (0.73")	757 (1.67)	🔍
	117.185739.E*	1.1/16" UN ORB (int.)	SAE J1926	90 - 116	83,6 (3.29")	30,0 (1.3/16")	49,21 (1.15/16")	54,0 (2.15")	L1 + L2 -18,5 (0.73")	752 (1.66)	✓
	117.186738.E*	3/4" NPTF (int.)	ANSI B1.20.3	68 - 88	89,2 (3.51")	31,8 (1.1/2")	53,97 (2.1/8")	58,8 (2.31")	L1 + L2 -24,3 (0.95")	1.004 (2.21)	🔍
	117.186739.E*	3/4" BSP (int.)	DIN 3852-2	120 - 150	88,2 (3.47")	31,8 (1.1/2")	53,97 (2.1/8")	58,8 (2.31")	L1 + L2 -24,3 (0.95")	990 (2.18)	🔍
	117.186741.E*	1" NPT (int.)	ANSI B1.20.1	82 - 108	90,3 (3.56")	35,0 (1.3/8")	53,97 (2.1/8")	58,8 (2.31")	L1 + L2 -24,3 (0.95")	1.030 (2.27)	✓
19,1 (3/4")	117.186742.E*	1" BSP (int.)	DIN 3852-2	200 - 240	89,8 (3.54")	35,0 (1.3/8")	53,97 (2.1/8")	58,8 (2.31")	L1 + L2 -24,3 (0.95")	1.026 (2.26)	🔍
	117.186743.E*	1.1/16" UN ORB (int.)	SAE J1926	90 - 116	89,3 (3.52")	31,8 (1.1/2")	53,97 (2.1/8")	58,8 (2.31")	L1 + L2 -24,3 (0.95")	986 (2.17)	🔍
	117.186745.E*	1.5/16" UN ORB (int.)	SAE J1926	128 - 160	89,8 (3.54")	35,0 (1.3/8")	53,97 (2.1/8")	58,8 (2.31")	L1 + L2 -24,3 (0.95")	1.030 (2.27)	✓
	117.186746.E*	FLANGE HEAD SIZE 25 (1")	ISO 6162-2	-----	85,7 (3.37")	33,4 (1.5/16")	53,97 (2.1/8")	58,8 (2.31")	L1 + L2 -24,3 (0.95")	1.064 (2.35)	🔍
	117.187744.E*	1" NPTF (int.)	ANSI B1.20.1	82 - 108	92,7 (3.65")	39,7 (1.9/16")	60,3 (2.3/8")	66,8 (2.63")	L1 + L2 -24,0 (0.95")	1.394 (3.07)	🔍
	117.187745.E*	1" BSP (int.)	DIN 3852-2	200 - 240	92,7 (3.65")	39,7 (1.9/16")	60,3 (2.3/8")	66,8 (2.63")	L1 + L2 -24,0 (0.95")	1.377 (3.04)	🔍
25,40 (1")	117.187746.E*	1.1/4" NPTF (int.)	ANSI B1.20.1	94 - 126	93,2 (3.67")	46,1 (1.13/16")	60,3 (2.3/8")	66,8 (2.63")	L1 + L2 -24,0 (0.95")	1.491 (3.29)	✓
	117.187747.E*	1.1/4" BSP (int.)	DIN 3852-2	320 - 380	93,2 (3.67")	46,1 (1.13/16")	60,3 (2.3/8")	66,8 (2.63")	L1 + L2 -24,0 (0.95")	1.475 (3.25)	🔍
	117.187748.E*	1.5/16" UN ORB (int.)	SAE J1926	128 - 160	92,7 (3.65")	41,3 (1.5/8")	60,3 (2.3/8")	66,8 (2.63")	L1 + L2 -24,0 (0.95")	1.400 (3.09)	✓
	117.187749.E*	1.5/8" UN ORB (int.)	SAE J1926	180 - 210	92,7 (3.65")	46,1 (1.13/16")	60,3 (2.3/8")	66,8 (2.63")	L1 + L2 -24,0 (0.95")	1.453 (3.20)	🔍
	117.187752.E*	FLANGE HEAD SIZE 32 (1.1/4")	ISO 6162-2	-----	89,3 (3.52")	38,1 (1.1/2")	60,3 (2.3/8")	66,8 (2.63")	L1 + L2 -24,0 (0.95")	1.438 (3.17)	🔍
	117.189747.E*	1.1/4" NPTF (int.)	ANSI B1.20.1	94 - 126	113,6 (4.47")	57,2 (2.1/4")	85,8 (3.3/8")	88,9 (3.1/2")	L1 + L2 -29,6 (1.17")	3.280 (7.23)	🔍
38,10 (1.1/2")	117.189748.E*	1.1/4" BSP (int.)	DIN 3852-2	320 - 380	113,6 (4.47")	57,2 (2.1/4")	85,8 (3.3/8")	88,9 (3.1/2")	L1 + L2 -29,6 (1.17")	3.253 (7.17)	🔍
	117.189749.E*	1.1/2" NPTF (int.)	ANSI B1.20.1	114 - 146	113,6 (4.47")	57,2 (2.1/4")	85,8 (3.3/8")	88,9 (3.1/2")	L1 + L2 -29,6 (1.17")	3.199 (7.05)	🔍
	117.189751.E*	1.1/2" BSP (int.)	DIN 3852-2	320 - 380	113,6 (4.47")	57,2 (2.1/4")	85,8 (3.3/8")	88,9 (3.1/2")	L1 + L2 -29,6 (1.17")	3.180 (7.01)	🔍
	117.189752.E*	1.5/8" UN ORB (int.)	SAE J1926	180 - 210	113,6 (4.47")	57,2 (2.1/4")	85,8 (3.3/8")	88,9 (3.1/2")	L1 + L2 -29,6 (1.17")	3.246 (7.16)	🔍
	117.189753.E*	1.7/8" UN ORB (int.)	SAE J1926	209 - 231	110,9 (4.37")	57,2 (2.1/4")	85,8 (3.3/8")	88,9 (3.1/2")	L1 + L2 -29,6 (1.17")	3.420 (7.54)	🔍
	117.189754.E*	FLANGE HEAD SIZE 38 (1.1/2")	ISO 6162-2	-----	111,8 (4.40")	55,6 (2.3/16")	85,8 (3.3/8")	88,9 (3.1/2")	L1 + L2 -29,6 (1.17")	3.069 (6.77)	🔍
117.189798.EI*	FLANGE HEAD SIZE 32 (1.1/4")	ISO 6162-2	-----	151,4 (5.96")	57,2 (2.1/4")	85,8 (3.3/8")	88,9 (3.1/2")	L1 + L2 -29,6 (1.17")	3.676 (8.10)	🔍	

\*Adicione a letra "Y" no final do código para solicitar que o engate venha com uma capa protetora de alumínio.

\*Agregue la letra "Y" al final del código para solicitar que el acoplador venga con una tapa protectora de aluminio.

\*Add the letter "Y" at the end of the part number to request the coupler comes with an aluminum protective cap.

(int.)	Rosca Interna / Rosca Interna / Internal Thread
(ext.)	Rosca Externa / Rosca Externa / External Thread

✓	Normal de Linha / Disponible / Available
🔍	Sob Consulta / Bajo Pedido / On request